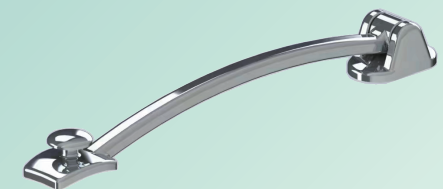
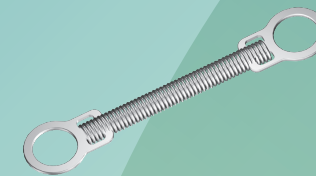
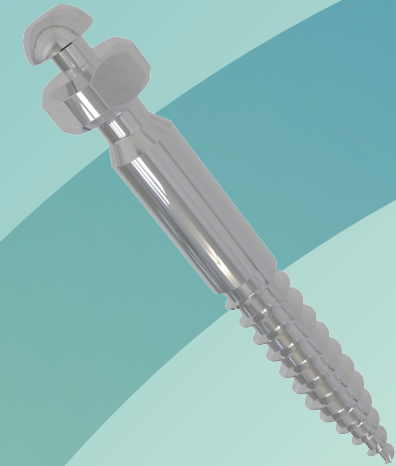
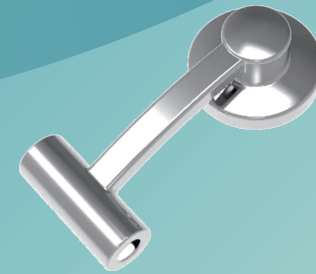
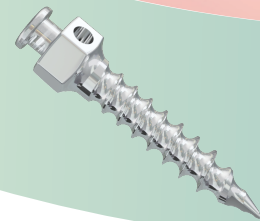
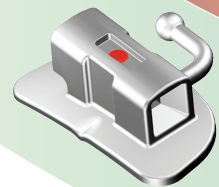
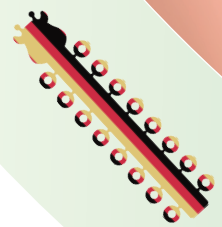


Vol. 2603042000EN

J&J[®]

ORTHODONTICS

ORTHODONTIC PRODUCTS CATALOG

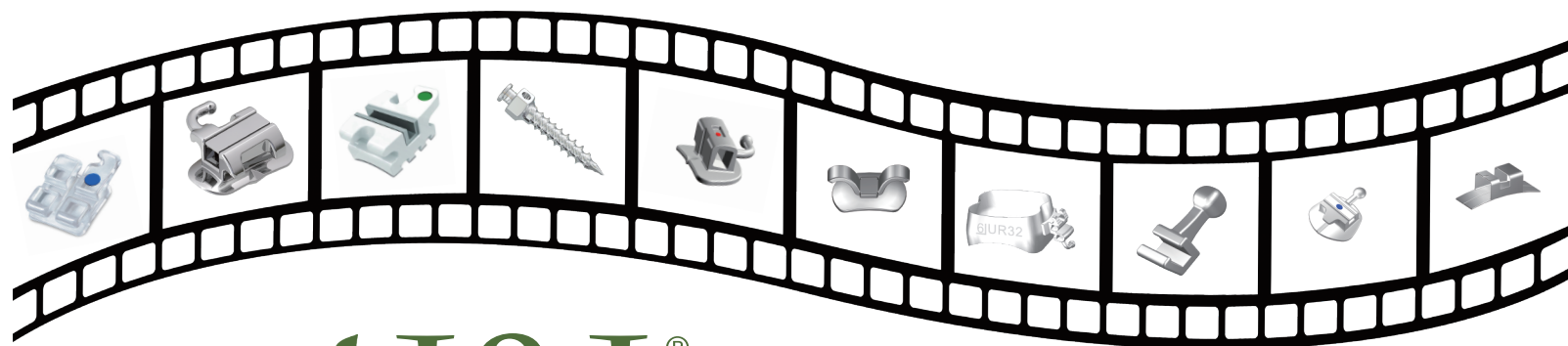


J&J[®]
ORTHODONTICS



6737 Palo Verde Pl Rancho Cucamonga CA 91739 United States
(855)935-3456 | www.jnjortho.com | jnjortho@gmail.com

ORDER NOW (855)935-3456
www.jnjortho.com



How to Order



Online Order
www.jnjortho.com



Call to Order
Toll-free from the USA and Canada
(855)935-3456
Monday through Friday
9:00am to 13:00pm (PST)



Email Order
jnjortho@gmail.com



About Us

J&J® is a trademark registered with USPTO and solely owned by CSY International LLC. We are a professional and reliable supplier specialized in orthodontic products and services with FDA Medical Device establishment registration. We are headquartered in Rancho Cucamonga, California, United States. We have been dedicated to continuously innovating products and processes to provide the best overall value to our customers.

With over 10 years of experience, we focus ourselves on serving customers with high-quality products; and we work diligently to keep our costs low because every dollar we save equals savings passed on to our customers and partners.

We proudly provide the highest level of orthodontic products and service at exceptionally reasonable prices to help orthodontists give patients the smiles they deserve.

From sales to customer service, manufacturing to marketing, and everything in between, we are focused on building strong relationships and exceeding your expectations every step of the way. We are passionate about our business relationship and our friendly, knowledgeable customer support team will guide you through every process.

Core Value

We always keep ourselves in innovative and faithful business to fulfill users' needs and meet customers' satisfaction.



Table of Contents

Bracket System

PRECISA II Metal Bracket	.. 04
DORADA Gold Plated Metal Bracket	.. 04
VICTOR VERTICAL SLOT BRACKET	.. 05
SUAVEQ Passive SL Metal Bracket	.. 06
SUAVEII Passive SL Metal Bracket	.. 07
VELOZ-A Active SL Metal Bracket	.. 08
NIEVEII Active SL Ceramic Bracket	.. 09
NIEVEII Passive SL Ceramic Bracket	.. 09
CLARO Sapphire Bracket	.. 10
CLARO Resin Bracket	.. 11

Molar Tube & Band

Buccal Tube	.. 12
1st Molar Self-Ligation	.. 12
Bicuspid Bondable	.. 12
1st Molar Convertible Bondable	.. 13
1st Molar Non-Convertible Bondable	.. 14
2nd Molar Non-Convertible Bondable	.. 15
Molar Band	.. 15
1st Molar Band	.. 15
2nd Molar Band	.. 16
Molar Band Kit	.. 17
Individual Molar Band	.. 17
Bicuspid Band	.. 18
Molar Space Regainer	.. 18
Molar Space Maintainer	.. 18

Attachment

Bondable Retainer	.. 19
Tongue Tamer	.. 19
Bondable Tubewith Hook	.. 19
Lingual Button	.. 19
Lingual Cleat	.. 19
Lingual Cleat with Hole	.. 19
Ceramic Button	.. 19
Double Tube	.. 19
Bondable Eyelet	.. 19
Extrusion Eyelet	.. 20
Extrusion Eyelet Chain	.. 20
Rotation Button Tube	.. 20
Bondable Single Hook	.. 20
Bondable Directional Hook	.. 20
Bondable Multi-Hook	.. 20
Bondable Y-Hook	.. 20
Lingual Sheath	.. 20
Crimpable Wire Stop	.. 21
Gurin Screwable Hook	.. 21
Crimpable Arch Hook	.. 21
Crimpable Power Hook	.. 21
Spiral Multi Power Hook	.. 21
Crimpable Ball Hook	.. 21
Crimpable Bi-Directional T-Hook	.. 21
Expansion Screws	.. 22
Rectangular Tube	.. 22
ABRAM Eruptor Button Tube	.. 22
Tri-Pull Molar Motion Appliance	.. 22

BiteForce

BiteForce NC1 Distalizing Button	.. 22
BiteForce NC2 Distalizing Bar	.. 22
BiteForce NC3 Device	.. 22

Wire & Spring

Archwire	.. 23
White Coated Aesthetic Archwire	.. 24
NiTi Reverse Curve Archwire	.. 24
Stainless Steel Straight Wire	.. 24
TMA Archwire	.. 24
Thermal Activated Nitinol Archwire	.. 25
Stainless Steel Twist Wire	.. 25
NiTi Wire Spool	.. 25
Copper-NiTi Archwire with Stops	.. 25
Australian S.S. Wire Spool	.. 25
Australian S.S. Straight Wire	.. 26

S.S. Braided Retainer Wire	.. 26
FLEXWISE Retention Wire	.. 26
Ligature Wire Spool	.. 26
Preformed Ligature Wire	.. 26
Kobayashi Wire	.. 26
Quad Helix	.. 26
Anterior Torquing	.. 27
Auxiliary Arch Spring	.. 27
Auxiliary Light Torquing Arch	.. 27
Separating Spring	.. 27
Uprighting Spring	.. 27
Rotation Spring	.. 27
Connection Monkey Hook	.. 27
Compliance Spring	.. 27
Double Torsion Spring	.. 27
Palatal Arch Bars	.. 27
NiTi Closed Spring with Eyelet	.. 28
Closed Spring Coil Spool	.. 28
Open Spring Coil	.. 28
NiTi Distalizing Spring	.. 28
Archway Torquing Spring	.. 28

TAD

Mini Screw	.. 29
Infra Zygomatic Crest Screw	.. 29
Smart Anchor Tool	.. 30

Elastomerics

Elastic O-Ring	.. 31
O-Ring Pick	.. 31
Elastic Power Chain	.. 33
Elastic Ligature Tie	.. 33
Double Color & Triple Color	.. 34
Radiopaque Separator	.. 35
Type-S Separator	.. 35
Rotation Wedge	.. 35
Elastic Power Thread	.. 35
Wire Tube Sleeve	.. 35
Protective Lip Bumper	.. 35

Extraoral

ComforPlus Reverse Gear	.. 36
Reverse Gear Protraction Facemask	.. 36
Combination Strap	.. 36
High Pull Strap	.. 36
Cervical Neck Strap	.. 36
Release Module	.. 36
Chin Cup	.. 36
J-Hooks	.. 36
Face Bow	.. 36

Supplies

Organizing Grid Box	.. 37
Magnetic Grid Box	.. 37
Smart Mold Kit	.. 37
Archwire Organizer	.. 37
Power Chain Organizer	.. 37
Ligature Tie Organizer	.. 37
EZZ Photo Lip Retractor	.. 37
Extraoral Cheek Retractor	.. 37
Intraoral Cheek Retractor	.. 37
Intraoral Cheek Lip Retractor Prop	.. 37
Lip Ring Retractor	.. 37
Photo Cheek Retractor	.. 37
Stainless Steel Cheek Retractor	.. 38
Nola Dry Field Systems	.. 38

Instrument

Aluminum Ruler	.. 38
Arch Forming Turret	.. 38
IPR (Interproximal Reduction)	.. 38
Ligature Gun	.. 38
Instrument Holder	.. 38
Orthodontic Pliers	.. 39
Direct Bond Bracket Tweezers	.. 42
Buccal Tube Placing Tweezers	.. 42
Mathieu & Smaha	.. 42
BeeBee Scissors	.. 43
Hand Tools	.. 43

METAL BRACKET PRECISA™ II

LASER ETCHED I.D. AT BOTTOM

clear and permanent etching indicates positioning

LOW PROFILE

reduces occlusal interference and enhances comfort

VERTICAL SCRIBE LINE

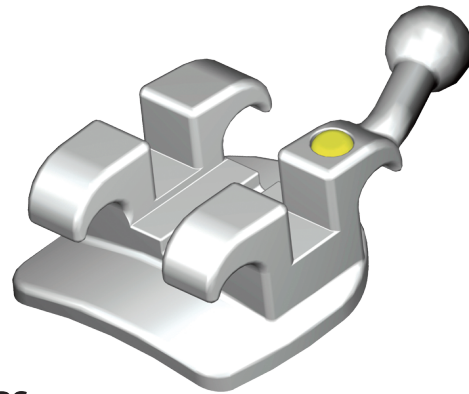
aligns with long axis for accurate placement

ROUNDED FACIAL COUNTOURS

enhance patient comfort

SURGICAL GRADE STAINLESS STEEL

for greater strength



COLOR ENHANCED I.D.

for easy positioning

INTEGRATED BALL HOOKS

for maximum strength

CHAMFERED SLOT DESIGN

for easier archwire placement

LOW FRICTION SLOT DESIGN

enhances sliding

TORQUE IN BASE

for level slot lineup and improved finishing

DORADA™ GOLD PLATED BRACKET



PRECISA II Metal Bracket is a great economic bracket system with easy identification.



DORADA II is processed with gold plating based on PRECISA II system which shares the same specification.

	PRECISA II		ROTH		Width (mm)		MBT		Width (mm)		EDGEWISE		Width (mm)	
	DORADA		Torq.	Ang.	MINI	STANDARD	Torq.	Ang.	MINI	STANDARD	Torq.	Ang.	MINI	STANDARD
Maxillary	Centrals		+12°	+5°	3.00	3.80	+17°	+4°	3.10	3.35	0°	0°	3.00	3.30
	Laterals		+8°	+9°	2.80	3.10	+10°	+8°	2.80	2.87	0°	0°	2.70	3.00
	Cuspids		-2°	+11°	3.00	3.60	0°	+8°	2.80	3.12	0°	0°	3.00	3.30
	Bicuspids		-7°	0°	2.80	3.10	-7°	0°	2.80	3.00	0°	0°	2.70	3.00
Mandibular	Anteriors		-1°	0°	2.40	2.40	-6°	0°	2.20	2.35	0°	0°	2.30	2.50
	Cuspids		-11°	+5°	2.80	3.10	-6°	+3°	2.80	3.10	0°	0°	3.00	3.30
	1st Bicuspids		-17°	0°	2.80	3.10	-12°	2°	2.80	3.00	0°	0°	2.70	3.00
	2nd Bicuspids		-22°	0°	2.80	3.10	-17°	2°	2.80	3.00	0°	0°	2.70	3.00

	Assorted Kit		MINI		STANDARD		MINI		STANDARD		MINI		STANDARD	
	PRECISA II		DORADA		PRECISA II		DORADA		PRECISA II		DORADA		PRECISA II	
PRECISA II	018 5-5,345H		120-18-553	130-18-553	121-18-553	131-18-553	122-18-553	132-18-553						
	022 5-5,345H		120-22-553	130-22-553	121-22-553	131-22-553	122-22-553	132-22-553						
DORADA	018 5-5,345H		126-18-553	127-18-553	124-18-553	125-18-553	-	-						
	022 5-5,345H		126-22-553	127-22-553	124-22-553	125-22-553	-	-						

VICTOR™ VERTICAL SLOT BRACKET



COLOR ID

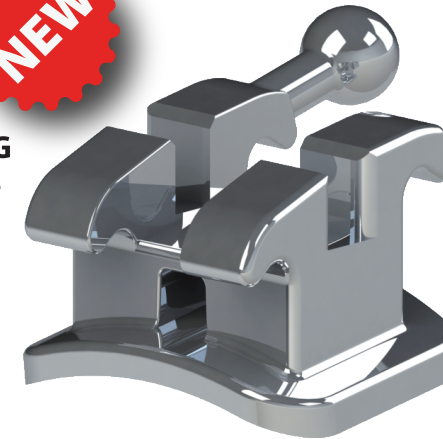
for easy positioning

THE CNC MANUFACTURING

insures exceptional archwire slot accuracy and superior finishing characteristics

VERSATILITY

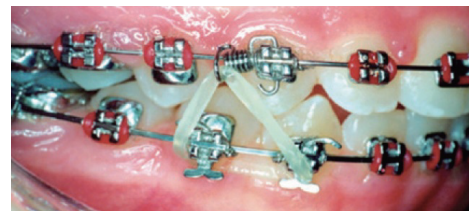
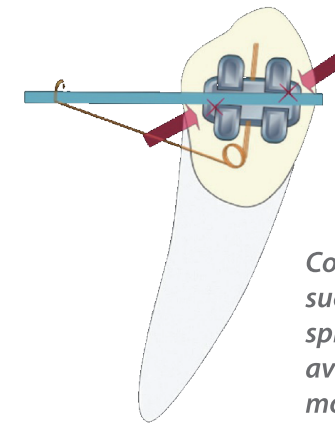
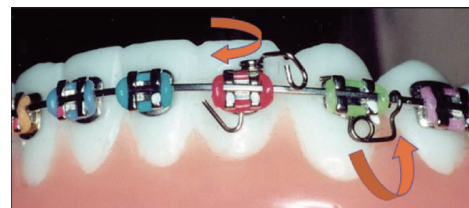
One of the most versatile appliances on the market



.018" x .018" VERTICAL SLOT allow for the use of uprighting, torquing and rotation auxiliaries as well as "T" hooks for Class II and box elastics.

CURVED MESH BASE

for better bonding and easy de-bonding



Combined use with variety of auxiliaries such as uprighting spring, compliance spring, rotation spring, T-pin. It is used on available cases to make the treatment more efficient while increasing patient comfort.

	VICTOR	R/L	ID	ROTH		Width (mm)		MBT		Width (mm)	
				Torq.	Ang.	MINI	STANDARD	Torq.	Ang.	MINI	STANDARD
Maxillary	Centrals	R		+12°	+5°	3.00	3.80	+17°	+4°	3.10	3.35
	Laterals	R		+8°	+9°	2.80	3.10	+10°	+8°	2.80	2.87
	Cuspids	R		-2°	+11°	3.00	3.60	0°	+8°	2.80	3.12
	Bicuspids	R		-7°	0°	2.80	3.10	-7°	0°	2.80	3.00
Mandibular	Anteriors	/		-1°	0°	2.40	2.40	-6°	0°	2.20	2.35
	Cuspids	R		-11°	+5°	2.80	3.10	0°	+3°	2.80	3.10
	1st Bicuspids	R		-17°	0°	2.80	3.10	-12°	+2°	2.80	3.00
	2nd Bicuspids	R		-22°	0°	2.80	3.10	-17°	+2°	2.80	3.00

	Assorted Kit	018 Slot	022 Slot	MINI		STANDARD		MINI		STANDARD	
				146-18-553	147-18-553	144-18-553	145-18-553				
				146-22-553	147-22-553	144-22-553	145-22-553				

SUAVE™ Q

Passive Self-Ligating METAL BRACKET

LASER BOTTOM ID
for easy positioning



ROUND-PROFILE
minimizes patient's discomfort and mucosa contact
avoid canker
for easy tooth brushing

SURGICAL GRADE STAINLESS STEEL
for greater strength



INTEGRATED HOOKS
for maximum power

OUTSTANDING ROTATION
torque and angulation control
shortens treatment process

SMART CLIP
for easy open and close
reduces operation time



The spherical self-ligating bracket introduces a new level of precision and efficiency in managing tooth movement and alignment, benefiting patients undergoing corrective treatment. The self-ligating mechanism eliminates the need for traditional ties or elastics, simplifying the adjustment process and making it more comfortable for the patient. Its innovative smooth spherical surface offering less oral abrasion and lower the risk of mucosal breakdown.

	SUAVE Q	R/L	ID	Width (mm)	Torq.	Ang.	ROTH .022"	Torq.	Ang.	MBT .022"
Maxillary	Centrals	R	●	3.00	+12°	+5°	112-2211	+17°	+4°	113-2211
		L	●				112-2221			113-2221
	Laterals	R	●	2.80	+8°	+9°	112-2212	+10°	+8°	113-2212
		L	●				112-2222			113-2222
Cuspids	R	●	2.80	-2°	+11°	112-2213(H)	0°	+8°	113-2213(H)	
	L	●				112-2223(H)			113-2223(H)	
Bicuspids	R	●	2.80	-7°	0°	112-2215(H)	-7°	0°	113-2215(H)	
	L	●				112-2225(H)			113-2225(H)	
Mandibular	Anteriors	/		2.60	-1°	0°	112-2241	-6°	0°	113-2241
	Cuspids	R	●	2.80	-11°	+5°	112-2243(H)	0°	+3°	113-2243(H)
		L	●				112-2233(H)			113-2233(H)
	1st Bicuspids	R	●	2.80	-17°	0°	112-2244(H)	-12°	+2°	113-2244(H)
		L	●				112-2234(H)			113-2234(H)
	2nd Bicuspids	R	●	2.80	-22°	0°	112-2245(H)	-17°	+2°	113-2245(H)
L		●	112-2235(H)				113-2235(H)			

Assorted Kit 5-5,345H 112-22-553 113-22-553

ORDER NOW (855)935-3456 | Email. jnjortho@gmail.com | www.jnjortho.com

Passive Self-Ligating METAL BRACKET

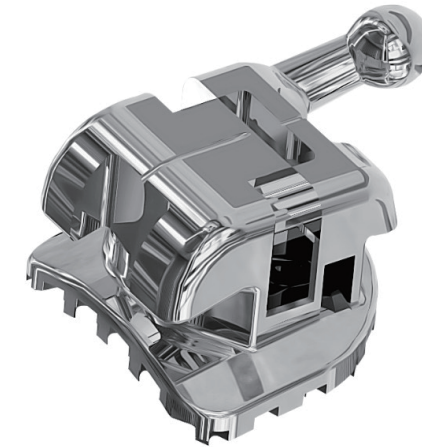
SUAVE™ II

COLOR ENHANCED I.D.
for easy positioning

OUTSTANDING ROTATION
torque and angulation control

LOW PROFILE AND ROUNDED COUNTOURS
enhance patient comfort.

SURGICAL GRADE MATERIAL
for greater strength



OPTIONAL HOOKS
for flexible treatment

CHAMFERED SLOT
easier wire placement

FULLY PASSIVE CAP
for lower friction

80 GAUGE MESH BASE
for stronger bonding



The opening clip allows for quick, easy, and time saving wire changes when compared to conventional brackets. Simply open the clip with a provided opener, engage the wire, and then slide the clip closed with your fingertip. Check the operation video in the website.

	SUAVE II	R/L	ID	Width (mm)	Torq.	Ang.	ROTH .022"	Torq.	Ang.	MBT .022"
Maxillary	Centrals	R	●	3.10	+12°	+5°	110-2211	+17°	+4°	111-2211
		L	●				110-2221			111-2221
	Laterals	R	●	2.80	+8°	+9°	110-2212	+10°	+8°	111-2212
		L	●				110-2222			111-2222
Cuspids	R	●	3.10	-2°	+11°	110-2213(H)	0°	+8°	111-2213(H)	
	L	●				110-2223(H)			111-2223(H)	
Bicuspids	R	●	2.90	-7°	0°	110-2215(H)	-7°	0°	111-2215(H)	
	L	●				110-2225(H)			111-2225(H)	
Mandibular	Anteriors	/		2.75	-1°	0°	110-2241	-6°	0°	111-2241
	Cuspids	R	●	3.10	-11°	+5°	110-2243(H)	0°	+3°	111-2243(H)
		L	●				110-2233(H)			111-2233(H)
	1st Bicuspids	R	●	2.90	-17°	0°	110-2244(H)	-12°	+2°	111-2244(H)
		L	●				110-2234(H)			111-2234(H)
	2nd Bicuspids	R	●	2.90	-22°	0°	110-2245(H)	-17°	+2°	111-2245(H)
L		●	110-2235(H)				111-2235(H)			

Assorted Kit 5-5,345H 110-22-553 111-22-553

ORDER NOW (855)935-3456 | Email. jnjortho@gmail.com | www.jnjortho.com

VELOZ™ A

Active Self-Ligating METAL BRACKET

METAL INJECTION MOLDED
to achieve excellent, predictable treatment results in less time.

FULL ROTATIONAL CONTROL
due to the mini twin design

LOW PROFILE
reduces occlusal interference
enhances comfort

COMPOUND CONTOUR BASE
for increased bond strength and precise bracket placement



COLOR ENHANCED I.D.
for easy bracket selection

NITI SPRING CLIP
for maximum resistance to permanent deformation, durability, and stable performance prevents unwanted opening, yet opens easily with an explorer, closes with gentle finger pressure

AMPLE TIE WING
for elastomeric chain and ties

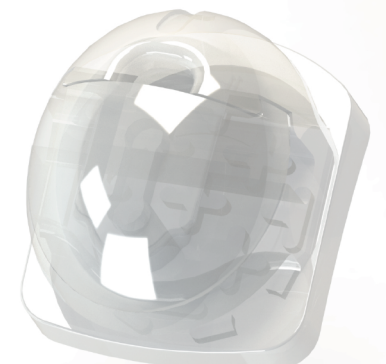


An INTERACTIVE self-ligating bracket which uses a spring clip that is strong enough to deliver continuous and consistent forces while assuring tooth movement control. When using round archwires (up to .020") allows PASSIVE engagement during initial leveling and alignment to reduce friction and improve sliding mechanics. When using rectangular archwires (from .016"x.022"), becomes ACTIVE to provide effective torque and rotation control toward the end of treatment.

NIEVE™ II

Active Self-Ligating CERAMIC BRACKET

Passive Self-Ligating CERAMIC BRACKET



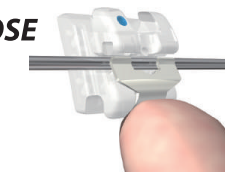
PASSIVE TO ACTIVE



OPEN



CLOSE



	VELOZ-A	R/L	ID	Width (mm)	Torq.	Ang.	ROTH .022"	Torq.	Ang.	MBT .022"
Maxillary	Centrals	R	●	2.96	+12°	+5°	156-2211	+17°	+4°	157-2211
		L	●				156-2221			157-2221
	Laterals	R	●	2.62	+8°	+9°	156-2212	+10°	+8°	157-2212
		L	●				156-2222			157-2222
	Cuspids	R	●	2.82	-2°	+11°	156-2213(H)	0°	+8°	157-2213(H)
		L	●				156-2223(H)			157-2223(H)
Bicuspid	R	●	2.75	-7°	0°	156-2215(H)	-7°	0°	157-2215(H)	
	L	●				156-2225(H)			157-2225(H)	
Mandibular	Anteriors	/		2.53	-1°	0°	156-2241	-6°	0°	157-2241
	Cuspids	R	●	2.71	-11°	+5°	156-2243(H)	0°	+3°	157-2243(H)
		L	●				156-2233(H)			157-2233(H)
	1st Bicuspid	R	●	2.74	-17°	0°	156-2244(H)	-12°	+2°	157-2244(H)
		L	●				156-2234(H)			157-2234(H)
	2nd Bicuspid	R	●	2.74	-22°	0°	156-2245(H)	-17°	+2°	157-2245(H)
L		●	156-2235(H)				157-2235(H)			

Assorted Kit 5-5,345H 156-22-553 157-22-553

	R/L	ID	ROTH 022		MBT 022		Width (mm)	NIEVE II ACTIVE		Width (mm)	NIEVE II PASSIVE		
			Torq.	Ang.	Torq.	Ang.		ROTH 022	MBT 022		ROTH 022	MBT 022	
Maxillary	Centrals	R	●	+11°	+17°	+5°	+4°	3.20	100-2211	101-2211	3.15	102-2211	103-2211
		L	●	100-2221	101-2221	102-2221	103-2221						
	Laterals	R	●	+8°	+10°	+9°	+8°	2.95	100-2212	101-2212	2.95	102-2212	103-2212
		L	●	100-2222	101-2222	102-2222	103-2222						
	Cuspids	R	●	-2°	0°	+8°	+8°	3.50	100-2213(H)	101-2213(H)	3.39	102-2213(H)	103-2213(H)
		L	●	100-2223(H)	101-2223(H)	102-2223(H)	103-2223(H)						
Bicuspid	R	●	-7°	-7°	0°	0°	3.35	100-2215(H)	101-2215(H)	3.20	102-2215(H)	103-2215(H)	
	L	●	100-2225(H)	101-2225(H)	102-2225(H)	103-2225(H)							
Anteriors	/		0°	-6°	0°	0°	2.85	100-2241	101-2241	2.92	102-2241	103-2241	
Mandibular	Cuspids	R	●	-11°	0°	+7°	+3°	3.50	100-2243(H)	101-2243(H)	3.36	102-2243(H)	103-2243(H)
		L	●	100-2233(H)	101-2233(H)	102-2233(H)	103-2233(H)						
	1st Bicuspid	R	●	-17°	-12°	0°	0°	3.35	100-2244(H)	101-2244(H)	3.21	102-2244(H)	103-2244(H)
		L	●	100-2234(H)	101-2234(H)	102-2234(H)	103-2234(H)						
	2nd Bicuspid	R	●	-22°	-17°	0°	0°	3.35	100-2245(H)	101-2245(H)	3.21	102-2245(H)	103-2245(H)
		L	●	100-2235(H)	101-2235(H)	102-2235(H)	103-2235(H)						
Assorted Kit					5-5, w/o Hooks			100-22-550	101-22-550		102-22-550	103-22-550	
					5-5,3H			100-22-551	101-22-551		102-22-551	103-22-551	
					5-5,345H			100-22-553	101-22-553		102-22-553	103-22-553	

ORDER NOW (855)935-3456 | Email.jnjortho@gmail.com | www.jnjortho.com

ORDER NOW (855)935-3456 | Email.jnjortho@gmail.com | www.jnjortho.com

SAPPHIRE BRACKET **CLARO™**

PURE MONOCRYSTALLINE SAPPHIRE

for virtually invisibility and great aesthetic effect

LOW PROFILE

reduces occlusal interference and enhances comfort

ROUNDED COUNTOURS

enhance patient comfort

POLISHED SURFACE AND ROUNDED EDGES

reduce frictions and enhance patient comfort

COLOR ENHANCED I.D.

for easy positioning

INTEGRATED HOOKS

for different attachments

TITANIUM COATED SLOT

provides excellent sliding

COATED BASE

for strong bonding and easy de-bonding

NON-ALLERGENIC FOR SENSITIVE PATIENT



CLARO sapphire bracket delivers exceptional results with features other cosmetic brackets just can't match. Each bracket is created from a single crystal of pure grown sapphire – one of the hardest materials in nature, second only to diamond. The crystal is honed and heat polished into a remarkably strong and beautiful bracket that's nearly invisible on the teeth. For a total aesthetic solution application, we recommend J&J aesthetic white coated wire. The bracket delivers exceptional rotational control, thanks to optimum mesial-distal width on the maxillary centrals and cuspids.

CLARO SAPPHIRE	R/L	ID	Width (mm)	Torq.	Ang.	ROTH .018"	ROTH .022"	Torq.	Ang.	MBT .018"	MBT .022"
Maxillary	Centrals	R	3.2	+11°	+5°	104-1811	104-2211	+17°	+4°	105-1811	105-2211
		L				104-1821	104-2221			105-1821	105-2221
	Laterals	R	2.95	+8°	+9°	104-1812	104-2212	+10°	+8°	105-1812	105-2212
		L				104-1822	104-2222			105-1822	105-2222
Cuspids	R	3.5	-2°	+8°	104-1813(H)	104-2213(H)	0°	+8°	105-1813(H)	105-2213(H)	
	L				104-1823(H)	104-2223(H)			105-1823(H)	105-2223(H)	
Bicuspids	R	3.2	-7°	0°	104-1815(H)	104-2215(H)	-7°	0°	105-1815(H)	105-2215(H)	
	L				104-1825(H)	104-2225(H)			105-1825(H)	105-2225(H)	
Mandibular	Anteriors	/	2.85	0°	0°	104-1841	104-2241	-6°	0°	105-1841	105-2241
	Cuspids	R	3.5	-11°	+7°	104-1843(H)	104-2243(H)	0°	+3°	105-1843(H)	105-2243(H)
		L				104-1833(H)	104-2233(H)			105-1833(H)	105-2233(H)
	1st Bicuspids	R	3.2	-17°	0°	104-1844(H)	104-2244(H)	-12°	0°	105-1844(H)	105-2244(H)
		L				104-1834(H)	104-2234(H)			105-1834(H)	105-2234(H)
	2nd Bicuspids	R	3.2	-21°	0°	104-1845(H)	104-2245(H)	-17°	0°	105-1845(H)	105-2245(H)
		L				104-1835(H)	104-2235(H)			105-1835(H)	105-2235(H)
	Assorted Kit	5-5,w/o Hooks					104-18-550	104-22-550			105-18-550
5-5,3H					104-18-551	104-22-551			105-18-551	105-22-551	
5-5,345H					104-18-553	104-22-553			105-18-553	105-22-553	

RESIN BRACKET

SMOOTH TIE-WINGS

engineered to provide superior patient comfort

RESIN INJECTION-MOLD

provides consistent strength and precision

BONDING BASE

reversed triangle grooves maximizes bonding strength

POLISHED SURFACE AND ROUNDED EDGES

reduce frictions and enhance patient comfort

COLOR ID MARK

for easy and accurate positioning

TRANSLUCENT BODY

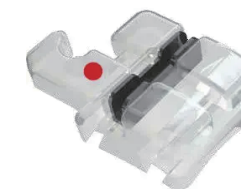
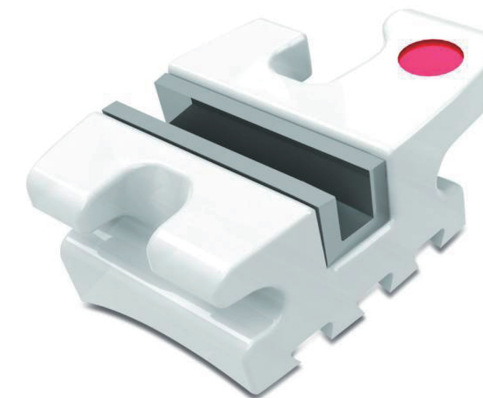
provides pleasant aesthetics

METAL SLOT

provides the same excellent sliding like metal bracket and optimize torque control with minimal friction.

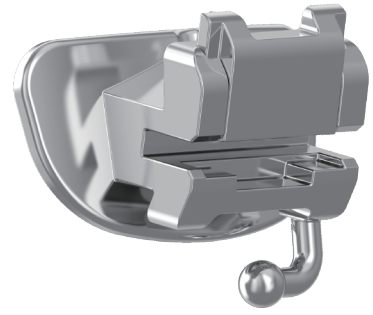
MECHANIC LOCK BASE

for strong bonding and easy de-bonding



CLARO resin bracket's metal slot insert is designed to lower friction as the wire touches the insert only at four small points at the polymeric wall. The steel in the slot is designed to translate the torque through the base without the usual distortion or give off the plastic and other polymeric materials. Unlike inserts, which only line the slot wall, CLARO resin slot is placed within the body to strengthen the entire bracket, not just the slot. This placement also conceals the steel insert, creating a more aesthetic appearance. CLARO can be utilized with any archwire. However, for a total aesthetic solution application, we recommend J&J aesthetic white coated wire.

CLARO RESIN	R/L	ID	Width (mm)	Torq.	Ang.	ROTH .018"	ROTH .022"	Torq.	Ang.	MBT .018"	MBT .022"
Maxillary	Centrals	R	3.5	+11°	+5°	108-1811	108-2211	+17°	+4°	109-1811	109-2211
		L				108-1821	108-2221			109-1821	109-2221
	Laterals	R	3.25	+8°	+9°	108-1812	108-2212	+10°	+8°	109-1812	109-2212
		L				108-1822	108-2222			109-1822	109-2222
Cuspids	R	3.5	-2°	+8°	108-1813(H)	108-2213(H)	0°	+8°	109-1813(H)	109-2213(H)	
	L				108-1823(H)	108-2223(H)			109-1823(H)	109-2223(H)	
Bicuspids	R	3.2	-7°	0°	108-1815(H)	108-2215(H)	-7°	0°	109-1815(H)	109-2215(H)	
	L				108-1825(H)	108-2225(H)			109-1825(H)	109-2225(H)	
Mandibular	Anteriors	/	3.15	0°	0°	108-1841	108-2241	-6°	0°	109-1841	109-2241
	Cuspids	R	3.5	-11°	+7°	108-1843(H)	108-2243(H)	0°	+3°	109-1843(H)	109-2243(H)
		L				108-1833(H)	108-2233(H)			109-1833(H)	109-2233(H)
	1st Bicuspids	R	3.2	-17°	0°	108-1844(H)	108-2244(H)	-12°	0°	109-1844(H)	109-2244(H)
		L				108-1834(H)	108-2234(H)			109-1834(H)	109-2234(H)
	2nd Bicuspids	R	3.2	-17°	0°	108-1845(H)	108-2245(H)	-12°	0°	109-1845(H)	109-2245(H)
		L				108-1835(H)	108-2235(H)			109-1835(H)	109-2235(H)
	Assorted Kit	5-5,3H					108-18-551	108-22-551			109-18-551
5-5,345H					108-18-553	108-22-553			109-18-553	109-22-553	

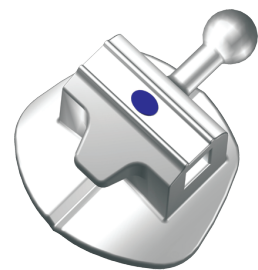


- Laser number indication for easy positioning.
- Integrated ball hooks for maximum power anchoring.
- With proven and precise torque values, in/out thickness and slot depths, the buccal tube is designed to ensure that you can spend time doing anything but wire bending.
- Self Ligating enables lower friction sliding during treatment.
- Low profile for minimizing patient's discomfort.
- Unique mesh base with exceptional stainless steel body.



1st Molar Self-Ligation

Tube	Pres.	Torq.	Offset	Width	R/L	ID	.018"	.022"
Maxillary	Roth	-9°	+7°	3.8	R		200-1816	200-2216
					L		200-1826	200-2226
	MBT	-14°	+10°	3.8	R		201-1816	201-2216
					L		201-1826	201-2226
Mandibular	Roth	-30°	+7°	3.8	R		200-1846	200-2246
					L		200-1836	200-2236
	MBT	-20°	0°	3.8	R		201-1846	201-2246
					L		201-1836	201-2236
Quadrand Kit	Roth	4 pcs / quadrant					200-1868	200-2268
	MBT	4 pcs / quadrant					201-1868	201-2268



- Rounded edge design to avoid occlusal interference.
- Color coded mark for easy positioning.
- Indented 80 gauge mesh on bondable type for an anatomically formed fit and maximum bond strength.
- Comfort designed ball hook enhances patient comfort and avoids gingival impingement.



Bicuspid Bondable

Tube	Pres.	Torq.	Offset	Width	R/L	ID	.018"	.022"
Maxillary	Roth	-7°	0°	3.5	R	●	210-1815	210-2215
					L	●	210-1825	210-2225
	MBT	-7°	0°	3.5	R	●	211-1815	211-2215
					L	●	211-1825	211-2225
Mandibular	Roth	-4°	0°	3.5	R	●	210-1845	210-2245
					L	●	210-1835	210-2235
	MBT	-14°	0°	3.5	R	●	211-1845	211-2245
					L	●	211-1835	211-2235
Assorted Kit	Roth	40 pcs/box (10 quadrant)					210-1859	210-2259
	MBT	40 pcs/box (10 quadrant)					211-1859	211-2259



MALLEABLE BALL HOOK

enhances patient comfort and avoids gingival impingement

ANGLED MESIAL EXTENSION TAB

to facilitate removal, simply "peel" the cap away using a Weingart or How Pliers

TORQUE-IN-BASE

for easier alignment with optimal functional occlusion and case finishing

AMPLE TIE WING AREA

for easy ligation

Single Tube Convertible



Double Tube Convertible



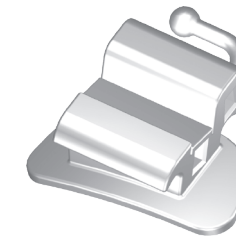
Triple Tube Convertible



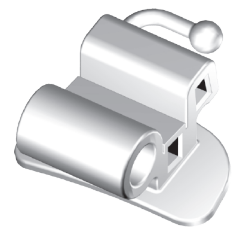
CONVERTIBLE CAPS
integrally molded for a consistent and predictable conversion

BRAZE
for maximum adhesion between the tube and mesh

80 GAUGE INDENTED MESH PAD
for an anatomically formed fit and maximum bond strength



Double Tube



Triple Tube

1st Molar Convertible Bondable

Tube	Pres.	Torq.	Offset	Width	R/L	ID	.018"	.022"
Single Tube	Roth	-9°	+7°	3.8	R	●	250-1816	250-2216
					L	●	250-1826	250-2226
	MBT	-14°	+10°	3.8	R	●	251-1816	251-2216
					L	●	251-1826	251-2226
Double Tube	Roth	-9°	+7°	3.8	R	●	260-1816	260-2216
					L	●	260-1826	260-2226
	MBT	-14°	+10°	3.8	R	●	261-1816	261-2216
					L	●	261-1826	261-2226
Triple Tube	Roth	-9°	+7°	3.8	R	●	270-1816	270-2216
					L	●	270-1826	270-2226
	MBT	-14°	+10°	3.8	R	●	271-1816	271-2216
					L	●	271-1826	271-2226
Single Tube	Roth	-30°	+7°	3.8	R	●	250-1846	250-2246
					L	●	250-1836	250-2236
	MBT	-20°	0°	3.8	R	●	251-1846	251-2246
					L	●	251-1836	251-2236
Double Tube	Roth	-30°	+7°	3.8	R	●	260-1846	260-2246
					L	●	260-1836	260-2236
	MBT	-20°	0°	3.8	R	●	261-1846	261-2246
					L	●	261-1836	261-2236
Single Tube Assorted Kit	Roth	40 pcs/box (10 quadrant)					250-1869	250-2269
	MBT	40 pcs/box (10 quadrant)					251-1869	251-2269
Double Tube Assorted Kit	Roth	40 pcs/box (10 quadrant)					260-1869	260-2269
	MBT	40 pcs/box (10 quadrant)					261-1869	261-2269
Triple Tube Assorted Kit	Roth	20 pcs/box					270-1869	270-2269
	MBT	20 pcs/box					271-1869	271-2269



Single Tube



Double Tube



Triple Tube



Single Tube



Double Tube

Maxillary

Mandibular

MALLEABLE BALL HOOK

enhances patient comfort and avoids gingival impingement

LOW PROFILE

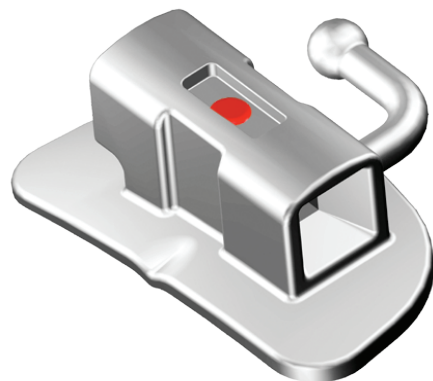
to avoid occlusal interference
2nd molar tube with smaller size

FULL FUNNELED ENTRANCE

helps guide wire into buccal tube

TORQUE-IN-BASE

for easier alignment with optimal functional occlusion and case finishing



COLOR ENHANCED I.D.
marks on the facial surface assist in bonding and positioning

DISTAL NOTCH
provides additional anchorage

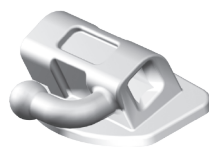
POSITIONING GUIDES
allow for easy placement at the posterior region and assist with minor adjustments prior to curing the adhesive

80 GAUGE INDENTED MESH PAD
for an anatomically formed fit and

Single Tube
Non-Convertible



Double Tube
Non-Convertible



Single Tube



Double Tube

J&J's advanced design and manufacturing technologies ensure the maximum strength of our small, precision tubes for increased efficiency and patient comfort. Both occlusal interference and gingival impingement are reduced.

1st Molar Non-Convertible Bondable

Tube	Pres.	Torq.	Offset	Width	R/L	ID	.018"	.022"
Single Tube Maxillary	Roth	-9°	+7°	3.8	R	●	210-1816	210-2216
					L	●	210-1826	210-2226
	MBT	-14°	+10°	3.8	R	●	211-1816	211-2216
					L	●	211-1826	211-2226
Double Tube Maxillary	Roth	-9°	+7°	3.8	R	●	220-1816	220-2216
					L	●	220-1826	220-2226
	MBT	-14°	+10°	3.8	R	●	221-1816	221-2216
					L	●	221-1826	221-2226
Single Tube Mandibular	Roth	-30°	+7°	3.8	R	●	210-1846	210-2246
					L	●	210-1836	210-2236
	MBT	-20°	0°	3.8	R	●	211-1846	211-2246
					L	●	211-1836	211-2236
Double Tube Mandibular	Roth	-30°	+7°	3.8	R	●	220-1846	220-2246
					L	●	220-1836	220-2236
	MBT	-20°	0°	3.8	R	●	221-1846	221-2246
					L	●	221-1836	221-2236
Single Tube Assorted Kit	Roth	40 pcs/box (10 quadrant)				210-1869	210-2269	
Double Tube Assorted Kit	MBT	40 pcs/box (10 quadrant)				211-1869	211-2269	
Single Tube Assorted Kit	Roth	40 pcs/box (10 quadrant)				220-1869	220-2269	
Double Tube Assorted Kit	MBT	40 pcs/box (10 quadrant)				221-1869	221-2269	

2nd Molar Non-Convertible Bondable

Tube	Pres.	Torq.	Offset	Width	R/L	ID	.018"	.022"
Maxillary	Roth	-9°	+6°	3.5	R	●	210-1817	210-2217
					L	●	210-1827	210-2227
	MBT	-14°	+6°	3.5	R	●	211-1817	211-2217
					L	●	211-1827	211-2227
Mandibular	Roth	-30°	+6°	3.5	R	●	210-1847	210-2247
					L	●	210-1837	210-2237
	MBT	-10°	0°	3.5	R	●	211-1847	211-2247
					L	●	211-1837	211-2237
Assorted Kit	Roth	40 pcs/box (10 quadrant)				210-1879	210-2279	
	MBT	40 pcs/box (10 quadrant)				211-1879	211-2279	

MOLAR BAND

FESTOONED EDGES

no sharp edges for maximum patient comfort

IDEALLY TEMPERED

for easy contouring

FULL FUNNELED ENTRANCE

helps guide wire into buccal tube



PERMANENT LASER I.D.
assists in bonding and positioning

ANATOMICALLY CONTOURED
for fast placement and accurate fit

MICRO ETCHED INTERIOR SURFACE
ensures maximum retention

Band Instruments - (See Instrument Section)

1st Molar Band

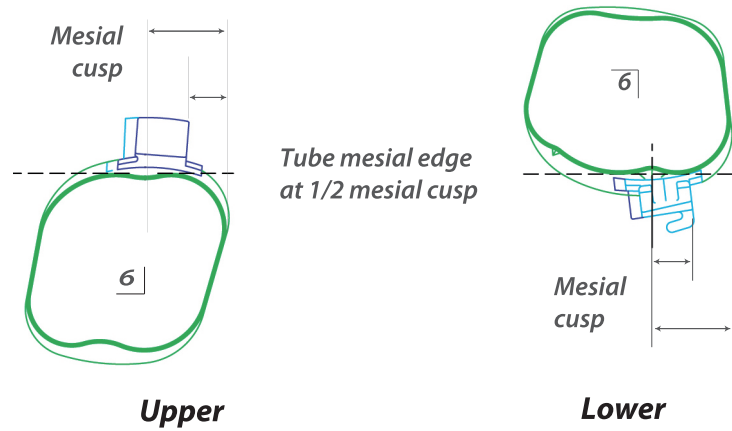


- Permanent laser ID marking.
- Available in size from #28 - #42+.
- Straight interproximal walls for reduced separation.
- Reduced gingival / occlusal dimensions for less occlusal and gingival interferences.
- Micro-etched inner surface for increased retention.
- Curved festooned occlusal interproximal.
- Increased occlusal "edge" strength for reduced deformation.



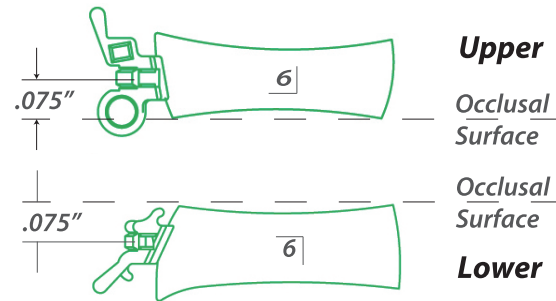
Buccal Tube Positioning - 1st Molar Upper

Mesial edge of buccal tube mesial cusp.



Occlusal / Gingival Positioning

The center of slot is .075" (1.9mm) from occlusal edge of band.
* Occlusal slot is used when there are 2 slots.



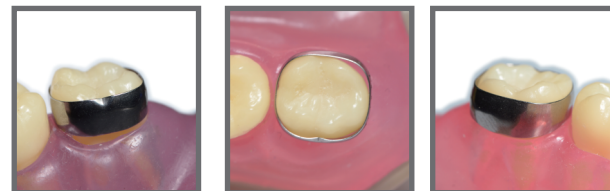
2nd Molar Band



Plain (without tube)

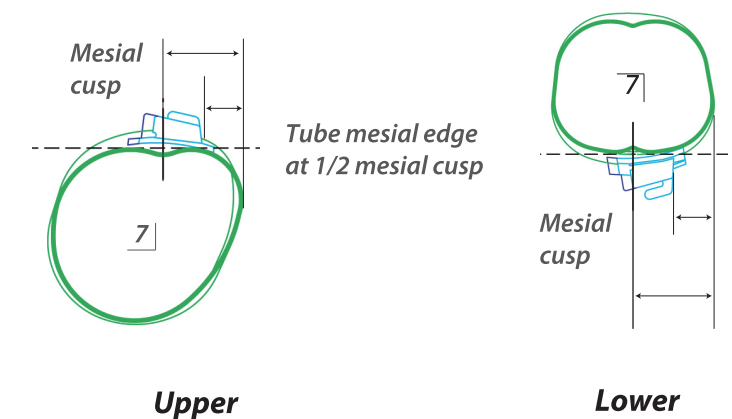


Pre-welded Single Tube



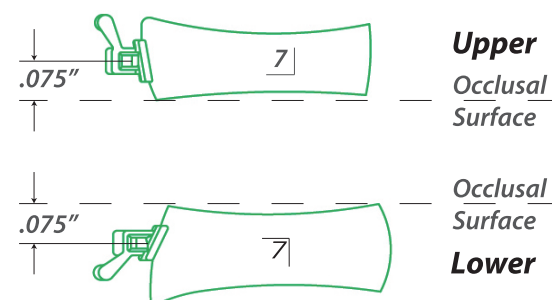
Buccal Tube Positioning - 2nd Molar

Mesial edge of buccal tube mesial cusp.



Occlusal / Gingival Positioning

The center of slot is .075" (1.9mm) from occlusal edge of band.
* Occlusal slot is used when there are 2 slots.



MOLAR BAND KIT

KIT	32	32+	33	33+	34	34+	35	35+	36	36+	37	37+	38	38+	39	39+	40	40+	41	41+
TRIAL (80)							8	8	8	8	8	8	8	8	8	8				
ELITE (160)				8	8	8	8	8	16	16	16	16	16	8	8	8	8			
PRO (216)	4	4	4	8	8	16	16	16	16	16	16	16	16	16	8	8	4	4	4	
REFILL-U (240)				20	20	20	20	20	20	20	20	20	20	20	20	20				
REFILL-L (240)				20	20	20	20	20	20	20	20	20	20	20	20	20				

- Kits are packed in grid box for easy organizing and management.
- All sizes can be ordered separately by quadrant.
- Individual quadrants are available from #28 to #42+
- All 1st molar band kits are available in Primary(No Tube), Single Tube, Double Tube, Combo Tube.
- All 2nd molar band kits are available in Primary(No Tube), Single Tube.
- Bands are located by each position in Refill Kit and by each quadrant (4 bands) in other kits.

INDIVIDUAL MOLAR BAND



Size	1st Molar						2nd Molar				
	Perimeter(mm)		Item SKU No.				Perimeter(mm) Upper/Lower	Item SKU No.			
	Upper	Lower	UR	UL	LL	LR		UR	UL	LL	LR
28	27.5	28.0	316-280	326-280	336-280	346-280	28.0	317-280	327-280	337-280	347-280
28+	28.0	28.5	316-281	326-281	336-281	346-281	28.5	317-281	327-281	337-281	347-281
29	28.5	29.0	316-290	326-290	336-290	346-290	29.0	317-290	327-290	337-290	347-290
29+	29.0	29.5	316-291	326-291	336-291	346-291	29.5	317-291	327-291	337-291	347-291
30	29.5	30.0	316-300	326-300	336-300	346-300	30.0	317-300	327-300	337-300	347-300
30+	30.0	30.5	316-301	326-301	336-301	346-301	30.5	317-301	327-301	337-301	347-301
31	30.5	31.0	316-310	326-310	336-310	346-310	31.0	317-310	327-310	337-310	347-310
31+	31.0	31.5	316-311	326-311	336-311	346-311	31.5	317-311	327-311	337-311	347-311
32	31.5	32.0	316-320	326-320	336-320	346-320	32.0	317-320	327-320	337-320	347-320
32+	32.0	32.5	316-321	326-321	336-321	346-321	32.5	317-321	327-321	337-321	347-321
33	32.5	33.0	316-330	326-330	336-330	346-330	33.0	317-330	327-330	337-330	347-330
33+	33.0	33.5	316-331	326-331	336-331	346-331	33.5	317-331	327-331	337-331	347-331
34	33.5	34.0	316-340	326-340	336-340	346-340	34.0	317-340	327-340	337-340	347-340
34+	34.0	34.5	316-341	326-341	336-341	346-341	34.5	317-341	327-341	337-341	347-341
35	34.5	35.0	316-350	326-350	336-350	346-350	35.0	317-350	327-350	337-350	347-350
35+	35.0	35.5	316-351	326-351	336-351	346-351	35.5	317-351	327-351	337-351	347-351
36	35.5	36.0	316-360	326-360	336-360	346-360	36.0	317-360	327-360	337-360	347-360
36+	36.0	36.5	316-361	326-361	336-361	346-361	36.5	317-361	327-361	337-361	347-361
37	36.5	37.0	316-370	326-370	336-370	346-370	37.0	317-370	327-370	337-370	347-370
37+	37.0	37.5	316-371	326-371	336-371	346-371	37.5	317-371	327-371	337-371	347-371
38	37.5	38.0	316-380	326-380	336-380	346-380	38.0	317-380	327-380	337-380	347-380
38+	38.0	38.5	316-381	326-381	336-381	346-381	38.5	317-381	327-381	337-381	347-381
39	38.5	39.0	316-390	326-390	336-390	346-390	39.0	317-390	327-390	337-390	347-390
39+	39.0	39.5	316-391	326-391	336-391	346-391	39.5	317-391	327-391	337-391	347-391
40	39.5	40.0	316-400	326-400	336-400	346-400	40.0	317-400	327-400	337-400	347-400
40+	40.0	40.5	316-401	326-401	336-401	346-401	40.5	317-401	327-401	337-401	347-401
41	40.5	41.0	316-410	326-410	336-410	346-410	41.0	317-410	327-410	337-410	347-410
41+	41.0	41.5	316-411	326-411	336-411	346-411	41.5	317-411	327-411	337-411	347-411
42	41.5	42.0	316-420	326-420	336-420	346-420	42.0	317-420	327-420	337-420	347-420

Bicuspid Band



Plain Bicuspid Band



Bicuspid Band with pre-welded bracket

- Designed for practitioners who prefer a wedge fit
- Universal anatomy fits rights and lefts
- Kits may be split left/right for angulated brackets
- Regular temper
- Permanent laser ID
- Pre-welded brackets are available in Roth / MBT Prescription

Size	Perimeter(mm)		Item SKU No.	
	Upper	Lower	U45	L45
1	21	20.5	315-001	335-001
2	21.6	21.1	315-002	335-002
3	22.2	21.6	315-003	335-003
4	22.7	22.1	315-004	335-004
5	23.2	22.6	315-005	335-005
6	23.7	23.3	315-006	335-006
7	24.2	24	315-007	335-007
8	25	24.5	315-008	335-008
9	25.5	25	315-009	335-009
10	26.5	26	315-010	335-010
11	27.5	27	315-011	335-011
12	28	27.5	315-012	335-012
13	28.5	28	315-013	335-013
14	29	28.5	315-014	335-014
15	29.5	29	315-015	335-015

Molar Space Regainer



Molar Space Maintainer

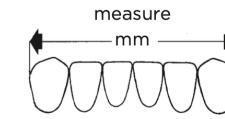


- Used to regain/maintain space
- Applies constant tension and may be used to move a premolar mesially with some reciprocal distal movement of the permanent molar.
- To adjust the appliance, simply stretch the coil springs / supporting bar prior to the initial seating of the appliance.
- No further adjustment is usually necessary.

Size	Molar Space Regainer					Molar Space Maintainer				
	4/quad	UR	UL	LR	UR	4/quad	UR	UL	LR	UR
#32	351-32	351-32-16	351-32-26	351-32-36	351-32-46	352-32	352-32-17	352-32-27	352-32-37	352-32-47
#33	351-33	351-33-16	351-33-26	351-33-36	351-33-46	352-33	352-33-17	352-33-27	352-33-37	352-33-47
#34	351-34	351-34-16	351-34-26	351-34-36	351-34-46	352-34	352-34-17	352-34-27	352-34-37	352-34-47
#35	351-35	351-35-16	351-35-26	351-35-36	351-35-46	352-35	352-35-17	352-35-27	352-35-37	352-35-47
#36	351-36	351-36-16	351-36-26	351-36-36	351-36-46	352-36	352-36-17	352-36-27	352-36-37	352-36-47
#37	351-37	351-37-16	351-37-26	351-37-36	351-37-46	352-37	352-37-17	352-37-27	352-37-37	352-37-47
#38	351-38	351-38-16	351-38-26	351-38-36	351-38-46	352-38	352-38-17	352-38-27	352-38-37	352-38-47
#39	351-39	351-39-16	351-39-26	351-39-36	351-39-46	352-39	352-39-17	352-39-27	352-39-37	352-39-47
#40	351-40	351-40-16	351-40-26	351-40-36	351-40-46	352-40	352-40-17	352-40-27	352-40-37	352-40-47
#41	351-41	351-41-16	351-41-26	351-41-36	351-41-46	352-41	352-41-17	352-41-27	352-41-37	352-41-47
Assorted Kit (40/pk)	351-1-40					352-1-40				

Bondable Retainer

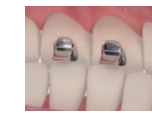
5/pk 3x3, .032" diameter
Pre-contoured offset bend allows for proper contact on the lingual surface. Performed for easy adaptation and minimal adjustment. Size is determined by millimeter measurement between distal surfaces of canines.



20mm	500-3220
22mm	500-3222
24mm	500-3224
26mm	500-3226
28mm	500-3228
30mm	500-3230
6 assorted size	500-32-6

Tongue Tamer

10/pk
Eliminates detrimental forces. Stop unwanted habits of thumb sucking and tongue thrusting. Bonds to upper or lower arches.



Type A Bite Block	501-101
Type B Tongue Tamer	501-102

Bondable Tube with Hook

10/pk
Anatomical design. Smooth and rounded hooks for maximum patient comfort. Mesh Pad for improved bond adhesion.



T-Hook .025"	501-301
T-Hook .019"x.025"	501-302
Dual Hook Left	501-401
Dual Hook Right	501-402

Lingual Button

10/pk
Accepts and retains elastics, elastic thread, and wires as applied from any direction. Smooth finish for excellent patient comfort. Multiple base options for different crown size and position.



Round Curved	502-101
Oval Flat	502-102
Trapezoid Flat	502-103
Hole Mesh Curved	502-104

Lingual Cleat

10/pk
Low profile for patient comfort
Easy to adjust wing hooks.

Round Curved	503-101
Oval Flat	503-102
Trapezoid Flat	503-103
Weldable	503-131



Lingual Cleat with Hole

10/pk
Low profile for patient comfort
Easy to adjust wing hooks.

with Horizontal Hole	503-111
with Vertical Hole	503-112



Ceramic Button

10/pk
Used with aligners or aesthetic bracket systems. Rounded low profile design for exceptional comfort.

White	504-101
Clear	504-102



Double Tube

10/pk 022 x.028
Easily connect auxiliary and custom attachments to arch wire. Perfect for different orthodontic TAD systems, diverse TAD technique use.

Cross Tube	505-101
Piggyback	505-102



Bondable Eyelet

10/pk
Redesigned low profile for exceptional comfort. Used for hooking to different accessories.

Round	506-101
Oval	506-201
Rectangular	506-301



Extrusion Eyelet

10/pk
Mesh pad for secure bonding. Redesigned low profile for exceptional comfort. Used for hooking to different accessories.

- Round **507-101**
- Oval **507-102**



Extrusion Eyelet Chain

2/pk 1" traction chain
Curved round base bondable to cuspids impacted palatally or labially. 14k gold and titanium nitride-coated hook & chain reduces possibility of allergic reactions.

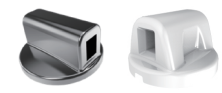
- Silver **509-101**
- Golden **509-102**



Rotation Button Tube

10/pk .022 x .028
Bondable to adjacent teeth to adjust angulation with a NiTi wire. Ceramic option is available for aligners or aesthetic systems.

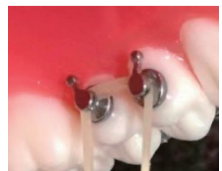
- Metal **507-301**
- Ceramic **504-401**



Bondable Single Hook

10/pk
Accepts and retains elastics, elastic threads, and wires. Semicircle base is especially designed for short crowns and is proved to be effective in practice. Ceramic option is available for aligners or aesthetic systems.

- Round Curved Base **514-201**
- Hole Curved Base **514-202**
- Semicircle Base **514-203**
- Ceramic White **504-201**
- Ceramic Clear **504-202**



Bondable Directional Hook

10/pk
Enhanced arm length to accept elastics and wires. Bendable arm can be easily adjusted to desired shape with tools like Weingart.

- Bendable Left **514-101**
- Bendable Right **514-102**



Bondable Power Hook

10/pk **NEW**
Optional arm length to accept elastics and wires in different cases. Ring hook is designed for more secured connection.

- Short Left **514-121**
- Short Right **514-122**
- Long Left **514-131**
- Long Right **514-132**
- Ring Hook with Tube **514-120**



Bondable Multi-Hook

10/pk
Accepts and retains multi elastics, elastic threads, and wires in different directions. Ceramic option is available for aligners or aesthetic systems.

- Metal **514-301**
- Ceramic **504-301**



Lingual Sheath

10/pk
Use with palatal plates, quad helix, and other devices designed for maxillary and mandibular.

- Left Hook **508-101**
- Right Hook **508-102**
- No Hook **508-103**



Crimpable Wire Stop

10/pk 2.0 mm in length
Comfortable to the patient due to the small size. Slides easily onto the arch wire for customized placement. Crimps easily into place with Crimping Pliers.

- Open .016" **510-116**
- Open .022" **510-122**
- Open .028" **510-128**
- Sealed .016" **510-216**
- Sealed .036" **510-236**



Gurin Screwable Hook

10/pk Includes a screw driver.
Perfect for adjustable or tie-back stop applications, spring activation, or the prevention of wire migration. Works with TAD mini-screws and closed springs.

- Left **510-501**
- Right **510-502**
- Straight **510-503**
- Lock (No Hook) **510-504**



Crimpable Arch Hook

10/pk .022x.028
Slides easily onto the arch wire for customized placement. Crimps easily into place with Crimping Pliers.

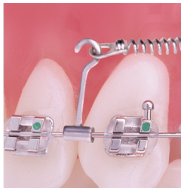
- Split Left **511-101**
- Split Right **511-102**
- Slide On Curved **511-103**
- Slide On Straight **511-104**



Crimpable Power Hook

10/pk .022x.028
Excellent for use with mini screw attachments. Easily and securely attach closed coil springs or any auxiliary attachments.

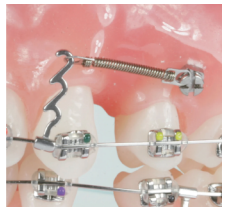
- Long Right **512-101**
- Long Left **512-102**
- Medium Right **512-201**
- Medium Left **512-202**
- Short Right **512-301**
- Short Left **512-302**



Spiral Multi Power Hook

10/pk .022x.028
Serving as reliable anchor points for elastics, headgear, and other auxiliary devices. Excellent for use with case requires multi hooking.

- Dual Hook Right **512-401**
- Dual Hook Left **512-402**
- Triple Hook Right **512-501**
- Triple Hook Left **512-502**



Crimpable Ball Hook

10/pk .022x.028
Smooth, rounded ball hooks can be placed precisely without removing the arch wire. Crimps to round or rectangular arch wires.

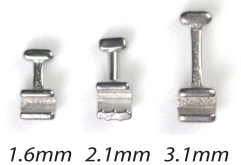
- Long **513-101**
- Medium **513-102**
- Short **513-103**



Crimpable Bi-Directional T-Hook

10/pk .022x.028
Easily place onto any size arch wire with crimping tool. Secure anchor for any auxiliary attachment

- Long **513-201**
- Medium **513-202**
- Short **513-203**



Expansion Screws

1/pk Includes a hand key

Expansion Screws are precision made and available in a variety of styles for various applications. Stainless steel bodies and threads are extremely strong, and the mechanical design minimizes the potential for back-turning.

- Mini Type **704-500**
- Standard Type **704-501**
- 8 mm **704-508**
- 9 mm **704-509**
- 11 mm **704-511**
- 13 mm **704-513**

Rectangular Tube

10/pk **704-601**

.022"x.028", Length 5mm

For use with suprastructures in orthodontic implantology for holding wires and springs. Compatible with Dentaureum implantology system

ABRAM™ Eruptor Button Tube

10/pk

Offset from the bonding pad allowing the tooth to be bonded as soon as it erupts but allows full activation of the NiTi wire. Oval base with holes for easy and strong bonding. Available with 1 or 2 tubes. The inner diameter of the tube is .020". Ideal for canines and second premolars. Available with 1 or 2 tubes. Ideal for canines and premolars.

- Single Tube **515-101**
- Double Tube **515-102**

Tri-Pull Molar Motion Appliance

2/pk, Hole size 0.90mm **516-101**

Used with TAD system to distalize premolars and molars. Capable to move 3 teeth simultaneously. Combined use with open coil, close coil and elastics.

BiteForce™ NC1 Distalizing Button

10/pk

Adjustable arm length
Easy and economic device for Class II and Class III initial stage of treatment.

Hole Size **.040"** **501-201**



Mini Type



Standard Type



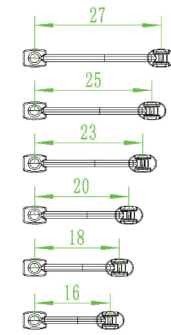
Sized Type

BiteForce™ NC2 Distalizing Bar

2/pk

Size measures from the midpoint on the facial surface of the teeth.

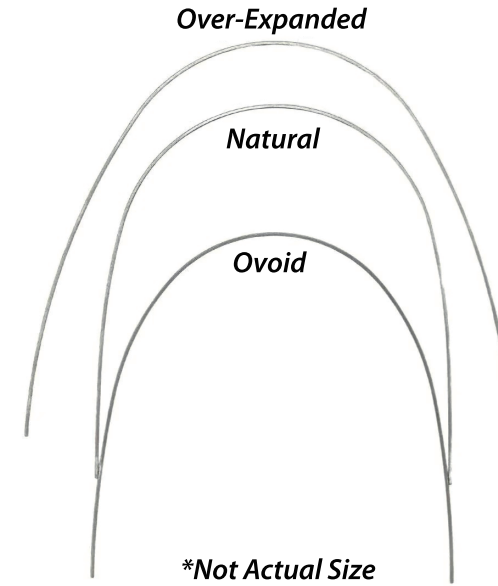
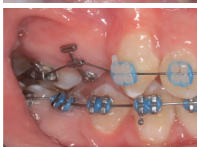
- 16 mm **501-216**
- 18 mm **501-218**
- 20 mm **501-220**
- 23 mm **501-223**
- 25 mm **501-225**
- 27 mm **501-227**
- 6 Size Kit **501-290**



BiteForce™ NC3 Device

Designed for Class II treatment by seamless chairside installation without necessitating the removal of brackets or archwires.

- Spring Module **2/pk** **501-501**
- Connection Pin **10/pk** **501-502**
- Split Crimp **10/pk** **501-503**
- Push Rod **1/pk**
- 22mm **Left** **501-522**
- Right** **501-622**
- 25mm **Left** **501-525**
- Right** **501-625**
- 29mm **Left** **501-529**
- Right** **501-629**
- 32mm **Left** **501-532**
- Right** **501-632**
- 35mm **Left** **501-535**
- Right** **501-635**
- 38mm **Left** **501-538**
- Right** **501-638**



Archwire

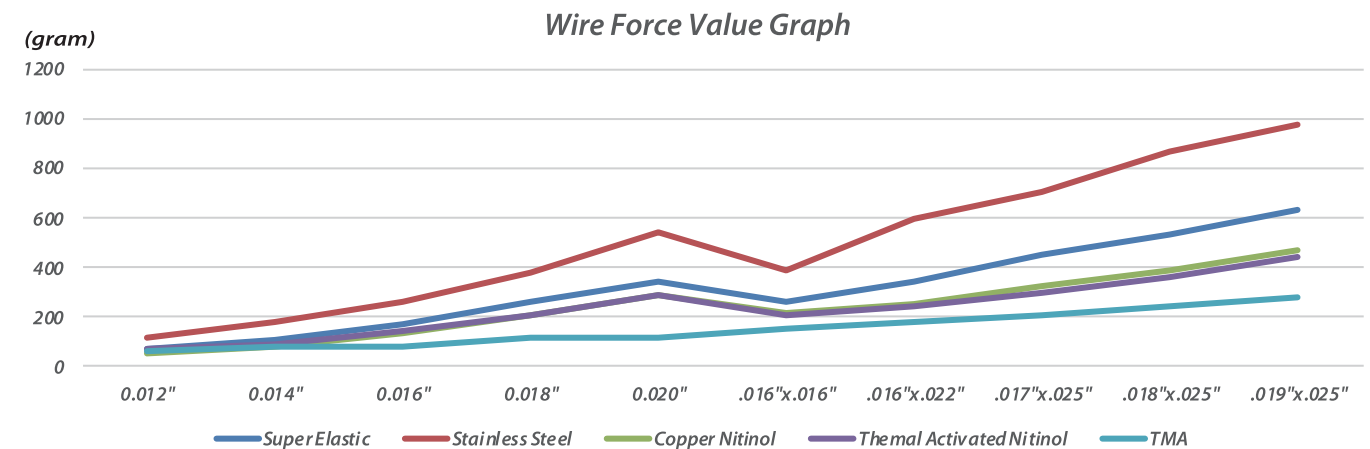
NiTi Ultra Elastic Archwire

Excellent choice for initial to mid stage treatment to level, align and rotate the teeth. Due to its high flexibility and resiliency, the Super Elastic wire provides consistent predictable forces to move the teeth in an efficient manner. A smooth bright finish enhances sliding mechanics.

Stainless Steel Archwire

Made of medical grade stainless materials, have smooth surfaces, accurate forms, and consistent forces to provide reduced friction and precise torque control. Proper wire characteristics are key in achieving treatment goals. Stainless Steel wires are diamond drawn to exacting tolerances guaranteed at ± .0005". Stringent quality control and testing assure our wire will maintain PSI rating batch after batch.

10/pk	Ovoid		Natural		Over-Expanded
	NiTi U(L)	S.S. U(L)	NiTi U(L)	S.S. U(L)	NiTi (S.S.)
012	400(1)-0012	402(3)-0012	404(5)-0012	406(7)-0012	408(9)-0012
014	400(1)-0014	402(3)-0014	404(5)-0014	406(7)-0014	408(9)-0014
016	400(1)-0016	402(3)-0016	404(5)-0016	406(7)-0016	408(9)-0016
018	400(1)-0018	402(3)-0018	404(5)-0018	406(7)-0018	408(9)-0018
020	400(1)-0020	402(3)-0020	404(5)-0020	406(7)-0020	408(9)-0020
016*016	400(1)-1616	402(3)-1616	404(5)-1616	406(7)-1616	408(9)-1616
016*022	400(1)-1622	402(3)-1622	404(5)-1622	406(7)-1622	408(9)-1622
017*025	400(1)-1725	402(3)-1725	404(5)-1725	406(7)-1725	408(9)-1725
018*025	400(1)-1825	402(3)-1825	404(5)-1825	406(7)-1825	408(9)-1825
019*025	400(1)-1925	402(3)-1925	404(5)-1925	406(7)-1925	408(9)-1925



White Coated Aesthetic Archwire

1/pk	Ovoid		Natural	
	NiTi U(L)	S.S. U(L)	NiTi U(L)	S.S. U(L)
012	410(1)-0012	412(3)-0012	414(5)-0012	416(7)-0012
014	410(1)-0014	412(3)-0014	414(5)-0014	416(7)-0014
016	410(1)-0016	412(3)-0016	414(5)-0016	416(7)-0016
018	410(1)-0018	412(3)-0018	414(5)-0018	416(7)-0018
020	410(1)-0020	412(3)-0020	414(5)-0020	416(7)-0020
016*016	410(1)-1616	412(3)-1616	414(5)-1616	416(7)-1616
016*022	410(1)-1622	412(3)-1622	414(5)-1622	416(7)-1622
017*025	410(1)-1725	412(3)-1725	414(5)-1725	416(7)-1725
018*025	410(1)-1825	412(3)-1825	414(5)-1825	416(7)-1825
019*025	410(1)-1925	412(3)-1925	414(5)-1925	416(7)-1925

- Durable epoxy tooth-color coating.
- Stain resistant.
- Available in NiTi and Stainless Steel.
- Made from premium Japanese NiTi material.
- Consistent loading and unloading forces.



2/pk	Curved Tail		Straight Tail	
	Upper	Lower	Upper	Lower
012	430-0012	431-0012	432-0012	433-0012
014	430-0014	431-0014	432-0014	433-0014
016	430-0016	431-0016	432-0016	433-0016
018	430-0018	431-0018	432-0018	433-0018
020	430-0020	431-0020	432-0020	433-0020
016*016	430-1616	431-1616	432-1616	433-1616
016*022	430-1622	431-1622	432-1622	433-1622
017*025	430-1725	431-1725	432-1725	433-1725
018*025	430-1825	431-1825	432-1825	433-1825
019*025	430-1925	431-1925	432-1925	433-1925

Stainless Steel Straight Wire

Round 20/pk	
Rectangular 10/pk	
012	419-0012
014	419-0014
016	419-0016
018	419-0018
020	419-0020
016*016	419-1616
016*022	419-1622
017*025	419-1725
018*025	419-1825
019*025	419-1925



NiTi Reverse Curve Archwire

NiTi Reverse Curve archwires provide excellent counter forces to achieve bite modifications quickly and efficiently, while also improving arch form integrity.

- Designed for bite opening and closing due to deep or open bites and provides excellent leveling and alignment.
- Predictable continuous force levels.
- Bright finish for optimal sliding mechanics.
- Resistant to deformation for high spring back.
- Consistent accurate arch shapes.
- Available with Curved Tail and Straight Tail.

TMA Archwire

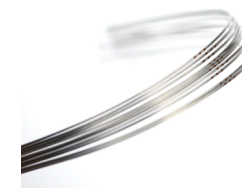
Great formability with an excellent range of activation. Provides SS bendability and NiTi flexibility. Moderate force between SS and regular NiTi.

Natural Form	U(L)
012	460(1)-0012
014	460(1)-0014
016	460(1)-0016
018	460(1)-0018
020	460(1)-0020
016*016	460(1)-1616
016*022	460(1)-1622
017*025	460(1)-1725
018*025	460(1)-1825
019*025	460(1)-1925



Thermal Activated Nitinol Archwire

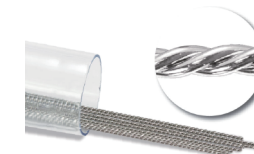
Heat activation, designed to resistance to permanent deformation when compared to NiTi, easy to engage, even in the most severe cases.



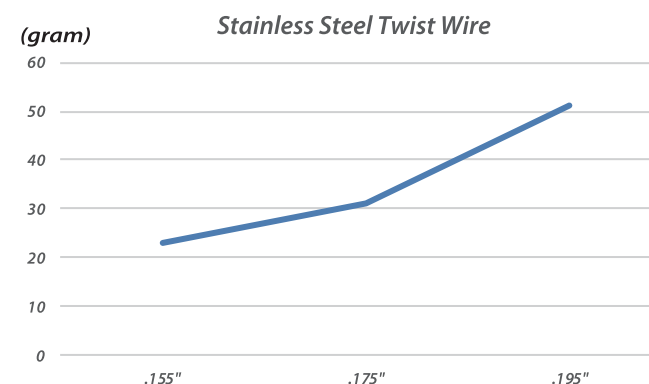
Natural Form	U(L)
012	424(5)-0012
014	424(5)-0014
016	424(5)-0016
018	424(5)-0018
020	424(5)-0020
016*016	424(5)-1616
016*022	424(5)-1622
017*025	424(5)-1725
018*025	424(5)-1825
019*025	424(5)-1925

Stainless Steel Twist Wire

14" Straight * 20 /pk
Delivers continuous light force over a greater distance and working range than solid round stainless steel wire of the same diameter; Silver-soldered to prevent unraveling, can be trimmed up to 3/8 in. (9.5 mm) without unraveling.



0.0155"	435-155
0.0175"	435-175
0.0195"	435-195



NiTi Wire Spool

5 meters (16.4')	
012	418-012
014	418-014
016	418-016
018	418-018
020	418-020



Copper-Niti Archwire with Stops

1/pk
The inclusion of copper to the nickel titanium alloy accentuates the thermal properties and working characteristics of the wire, 2 Wire stops are included for each wire.



Natural Form	U(L)
013	434-0013
014	434-0014
016	434-0016
018	434-0018
014*025	434-1425
016*022	434-1622
016*025	434-1625
017*025	434-1725
018*025	434-1825
019*025	434-1925



Australian S.S. Wire Spool

25'/Spool Special +
Offers superior hardness and tensile strength for a multitude of applications where exceptional resiliency is desired. Special Plus wires are ideal for bite opening and where high resiliency is required.



012	438-012
014	438-014
016	438-016
018	438-018
020	438-020

Australian S.S. Straight Wire

10" * 30/pk

Offers superior hardness and tensile strength for a multitude of applications where exceptional resiliency is desired. Heat treated pulse-straightened.



012	439-012
014	439-014
016	439-016
018	439-018
020	439-020

S.S. Braided Retainer Wire

6"x10/pk

Features a very thin rectangular wire that can be adapted with no occlusal interference while ensuring patient comfort. It prevents inadvertent tooth movement associated with active force wires.



010"x028"	437-1028
010"x032"	437-1032

FLEX WISE Retention Wire

40"/spool

A fixed lingual retainer composed of braided stainless steel, spool-based super flexible retention system, functionally similar to Reliance's Ortho FlexTech



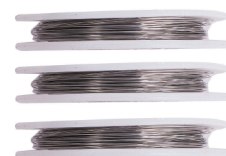
0.80x0.43mm Flexible	437-201
0.94x0.38mm Ultra-Flexible	437-202



Ligature Wire Spool

30g/Spool

Super smooth for easy ligature tying. Made of 304 Stainless Steel. Dead soft annealed.



.008"(0.20mm)	440-008
.010"(0.25mm)	440-010
.012"(0.30mm)	440-012

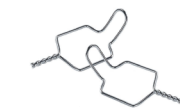
Preformed Ligature Wire

100/pk

Formed from dead soft temper SS. Great for lace backs and maintaining closed spaces.



Size	Short	Long
0.009	441-109	441-209
0.010	441-110	441-210
0.012	441-112	441-212
0.014	441-114	441-214



Kobayashi Wire

100/pk

Preformed wire helps speed placement. Made from 304 dead soft stainless steel with a bright, diamond die high quality finish.



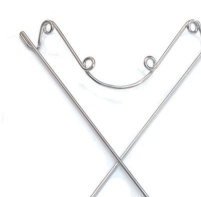
Size	Short	Long
0.010	441-310	441-410
0.012	441-312	441-412
0.014	441-314	441-414



Quad Helix

1/pk .036" preformed wire

Used to gently and gradually widen a patient's jaw and help treat a crossbite, a narrow jaw, and teeth crowding.

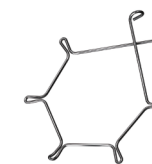


	Upper	Lower
Small	442-201	442-101
Medium	442-202	442-102
Large	442-203	442-103

Anterior Torquing Auxiliary Arch Spring

5/pk .016" spring temper wire

Used to engages the arch wire and provides lingual or labial torque to the maxillary or mandibular anterior teeth.



Watch application video from online store.

Upper Small	443-101
Upper Medium	443-102
Upper Large	443-103
Lower	443-121

Auxiliary Light Torquing Arch

10/pk .016" spring temper wire

Used to engages the arch wire and provides lingual torque to the maxillary central teeth.



444-101

Separating Spring

10/pk .018" spring temper wire

Produces continuous pressure to attains sufficient separation for band placement in 3-4 days. Used for separating teeth to aid in eruption. Easily placed and removed with ordinary small Bird Beak Pliers.



445-101

Uprighting Spring

10/pk

Made from .014" wire. Upright in individual teeth mesiodistally when used with vertically slotted brackets. View tooth from labial to determine whether crown requires clockwise or counterclockwise movement.

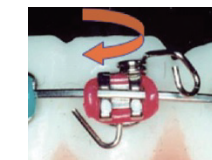


Left	446-501
Right	446-502

Rotation Spring

10/pk .016" spring temper wire

Use with vertically slotted brackets, springs can usually complete desired rotation in six weeks.

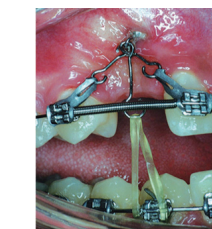


Left	446-101
Right	446-102

Connection Monkey Hook

10/pk .018" stainless steel wire

Used as an auxiliary for impacted, rotated and displaced teeth.



449-101

Compliance Spring

10/pk 008" spring temper wire

Used to provide labial root torque for lingually positioned upper or lower lateral incisor roots.



Left	447-101
Right	447-102

Double Torsion Spring

10/pk .016" spring temper wire

Used for palatally impacted teeth, to work with a final rectangular arch wire in order to express a maximum possible force to avoid undesirable side effects on anchorage and adjacent teeth.



Lingual	448-101
Buccal	448-102

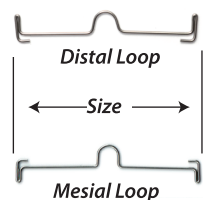
Palatal Arch Bars

5/pk .036" stainless steel wire

Control of upper first molars for stabilization, rotation, torquing or expansion. Rotate molars to the buccal by compressing the palatal loop during insertion.



Size	Goshgarian (Distal)	ReverseLoop (Mesial)
37 mm	449-137	449-237
39 mm	449-139	449-239
41 mm	449-141	449-241
43 mm	449-143	449-243
45 mm	449-145	449-245
47 mm	449-147	449-247
49 mm	449-149	449-249
51 mm	449-151	449-251
53 mm	449-153	449-253
55 mm	449-155	449-255

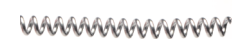


Open Spring Coil

Pack includes 2*7"(180mm)
Spool includes a length 3'(910mm)
.030" inner diameter

Cut to any length and compressed to provide optimum continuous maintenance or expansion force.

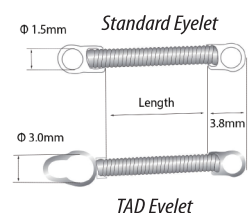
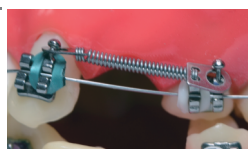
NiTi-Pack	.010"x.030"	453-210
NiTi-Pack	.012"x.030"	453-212
NiTi-Spool	.008"x.030"	453-008
NiTi-Spool	.010"x.030"	453-010
NiTi-Spool	.012"x.030"	453-012
NiTi-Spool	.014"x.030"	453-014
S.S.-Spool	.008"x.030"	453-108
S.S.-Spool	.010"x.030"	453-110
S.S.-Spool	.012"x.030"	453-112
S.S.-Spool	.014"x.030"	453-114



NiTi Closed Spring with Eyelet

10/pk

Delivers light, continuous force for retraction. Optional spring length and size for different retraction span and force choice. Standard and TAD Eyelet for different connection reception. Assorted Kit with box is an easy and convenient choice for daily practice.



Size	STD Eyelet	TAD Eyelet
.010"-3mm	450-1003	451-1003
.010"-6mm	450-1006	451-1006
.010"-9mm	450-1009	451-1009
.010"-12mm	450-1012	451-1012
.010"-15mm	450-1015	451-1015
.012"-3mm	450-1203	451-1203
.012"-6mm	450-1206	451-1206
.012"-9mm	450-1209	451-1209
.012"-12mm	450-1212	451-1212
.012"-15mm	450-1215	451-1215
6 Assorted Size	450-1-60	451-1-60
10 Assorted Size	450-1-100	451-1-100



NiTi Distalizing Spring

Pack includes 1*7"(180mm)
Tube includes 10*7"(180mm)
.030" inner diameter

Place over archwire and anchor with stop hook and elastics or Nance Appliance for maximum effectiveness. Intermittent closed coil sections allow for end stops. Cut to any length and compressed to provide optimum continuous maintenance or expansion force.

Pack	.010"x.030"	454-210
Pack	.012"x.030"	454-212
Tube	.010"x.030"	454-410
Tube	.012"x.030"	454-412



Archway Torquing Spring

10/pk

Provides the unique ability to apply additional torquing force when needed to an anterior tooth. Each size is designed for a specific wire dimension and will not grip other dimensional wire sizes or round wire.

.016"x.022" (M/L)	455-1622-02(03)
.017"x.025" (M/L)	455-1725-02(03)
.018"x.025" (M/L)	455-1825-02(03)
.019"x.025" (M/L)	455-1925-02(03)
4-Size Kit. (M/L)	455-02(03)-40
Universal Crimpable	455-01-04



SMART ANCHOR™ SERIES

MINI SCREW

Rounded and Smooth Head
provides superior patient comfort and minimize foreign object sensation

Deep Valley
spiral makes stronger stability after installation

- Available in Titanium and Stainless Steel.
- Available in Standard and Crosshead types.



Two Cross Holes
makes it possible to use various wires and attachments

Round Neck
enlarges the contact with soft tissue to avoid inflammation

Self-drilling and Tapping
specially engineered threads with self-drilling and self-tapping to accelerate the process.

INFRA ZYGOMATIC CREST SCREW

Enlarged Neck
provides more space to accept springs or elastics

Deep Valley
spiral makes stronger stability after installation



Smooth Mushroom Shape Head
provides superior patient comfort and minimize foreign object sensation

Long Collar
the unique design of smooth body minimizes the chances of trauma, inflammation to patients.

Self-drilling and Tapping
specially engineered threads with self-drilling and self-tapping to accelerate the process.



Mini Screw

Accepts wires, hooks, lever arms, etc., up to 2.0mm in diameter, 10mm in length. Available in both Titanium and Stainless Steel.

Diameter	Titanium			Stainless Steel		
	L 6mm	L 8mm	L 10mm	L 6mm	L 8mm	L 10mm
1.2mm	560-1206	560-1208	560-1210	561-1206	561-1208	561-1210
1.4mm	560-1406	560-1408	560-1410	561-1406	561-1408	561-1410
1.6mm	560-1606	560-1608	560-1610	561-1606	561-1608	561-1610
1.8mm	560-1806	560-1808	560-1810	561-1806	561-1808	561-1810
2.0mm	560-2006	560-2008	560-2010	561-2006	561-2008	561-2010



Infra Zygomatic Crest Screw

Accepts wires, hooks, lever arms, etc., up to 2.4mm in diameter, 17mm in length. Made of Stainless Steel.

Diameter	L 7mm	L 8mm	L 10mm	L 12mm	L 14mm	L 17mm
1.2mm	562-1207	-	-	-	-	-
1.5mm	-	562-1508	-	-	-	-
1.8mm	-	-	562-1810	-	-	-
2.0mm	-	-	-	562-2012	562-2014	562-2017
2.4mm	-	-	-	-	-	562-2417



Hand Driver 563-101

Works with Driver Shaft to drill.



Short Tip

Works with Contra-angle Manual Handpiece or slow speed auto handpiece.

For Mini Screw **567-101**

For IZ Screw **567-102**



Driver Shaft

Works with Hand Driver to drill.

For Mini Screw **564-101**

For IZ Screw **564-102**



Short Hand Driver 568-101

Used for some easy drilling situation with Mini Screw. NOT compatible with IZ screw.



Drill Tip 565-101

Works with Contra-angle Manual Handpiece or slow speed auto handpiece. Used to pre-drill for some special cases.



Surgical Tray 569-101

Used for organize tools and screws for surgical purpose. Autoclavable up to 280 °F and 20 psi.



Smart Angle 566-020

Contra-Angle Manual Handpiece

Works with Short Tip. Especially used for posterior area.

Elastic O-Ring

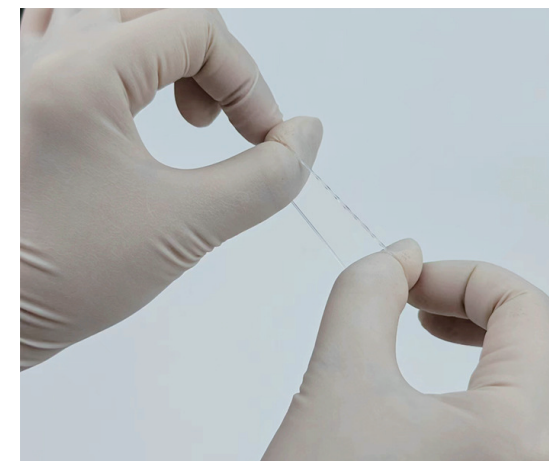
100/pk * 50pk/box

Made of top quality rubber tubing with exact dimensions. Our proprietary technique results in precision cutting and assures consistent pulling forces.

- High Grade Latex Elastics
- High Grade Latex-Free Elastics
- Minimum 40% 24-hour residual force



Latex / Latex-Free Elastics					
Size	Power	Inner Diameter	Cross section Thickness	Innitial Extension Force	24-hour Residual Force
1/8"	3.5 oz	.125" ± .010"	.035" ± .015"	100 ± 35 gf	Min 40%
1/8"	5.0 oz		.045" ± .020"	130 ± 35 gf	
1/8"	6.5 oz		.055" ± .020"	170 ± 35 gf	
3/16"	3.5 oz	.188" ± .010"	.035" ± .015"	100 ± 35 gf	
3/16"	5.0 oz		.045" ± .020"	130 ± 35 gf	
3/16"	6.5 oz		.055" ± .020"	170 ± 35 gf	
1/4"	3.5 oz	.250" ± .010"	.035" ± .015"	100 ± 35 gf	
1/4"	5.0 oz		.045" ± .020"	130 ± 35 gf	
1/4"	6.5 oz		.055" ± .020"	170 ± 35 gf	
5/16"	3.5 oz	.313" ± .010"	.035" ± .015"	100 ± 35 gf	
5/16"	5.0 oz		.045" ± .020"	130 ± 35 gf	
5/16"	6.5 oz		.055" ± .020"	170 ± 35 gf	
3/8"	3.5 oz	.375" ± .010"	.035" ± .015"	100 ± 35 gf	
3/8"	5.0 oz		.045" ± .020"	130 ± 35 gf	
3/8"	6.5 oz		.055" ± .020"	170 ± 35 gf	



O-Ring Pick 600-010

100/pk

Assorted colors. Used for placing and removing rubber O-ring. Double-sided design.





Elastic O-ring



Non-Latex Elastic O-ring

	Light 3.5oz(71g)	Medium 5.0oz(99g)	Heavy 6.5oz(128g)
○ 1/8"	600-135	600-150	600-165
○ 3/16"	600-235	600-250	600-265
○ 1/4"	600-335	600-350	600-365
○ 5/16"	600-435	600-450	600-465
○ 3/8"	600-535	600-550	600-565

	Light 3.5oz(71g)	Medium 5.0oz(99g)	Heavy 6.5oz(128g)
1/8"	610-135	610-150	610-165
3/16"	610-235	610-250	610-265
1/4"	610-335	610-350	610-365
5/16"	610-435	610-450	610-465
3/8"	610-535	610-550	610-565



Elastic Ligature Tie

26 x 40 stick per pk
 .045" Inner Diameter, .115" Outer Diameter.
 Used to retain wires to orthodontic devices,
 most commonly on brackets that do not have
 a self-ligating mechanism.
 Dual Color and Triple Color is available.
 16 x 20 stick per pk for dual color and triple
 color.

Elastic Power Chain

15'/Spool
 Stamped from bright, resilient thermo plastic
 material. Keeps elastic tension longer than
 other elastic chains.
 Superior color stability, fade resistant
 Medical grade polyurethane
 Dual Color and Triple Color is available.

Code	Color	Power Chain	Short	Medium	Long	Ligature Tie
C-01	Clear		601-101	601-201	601-301	607-101
C-02	Metal Gray		601-102	601-202	601-302	607-102
C-03	Milk White		601-103	601-203	601-303	607-103
C-04	Raspberry Red		601-104	601-204	601-304	607-104
C-05	Magenta		601-105	601-205	601-305	607-105
C-07	Pumpkin Orange		601-107	601-207	601-307	607-107
C-09	Black		601-109	601-209	601-309	607-109
C-10	Army Green		601-110	601-210	601-310	607-110
C-11	Mustard Yellow		601-111	601-211	601-311	607-111
C-13	Sky Blue		601-113	601-213	601-313	607-113
C-14	Mint Green		601-114	601-214	601-314	607-114
C-16	Eggplant Purple		601-116	601-216	601-316	607-116
C-24	Maya Blue		601-124	601-224	601-324	607-124
C-28	Violet		601-128	601-228	601-328	607-128
						Assorted Color 607-199



Double Color

Code	Double Color	Power Chain	Short	Medium	Long	Ligature Tie
D-01	Green/Yellow		611-101	611-201	611-301	617-101
D-02	Purple/Violet		611-102	611-202	611-302	617-102
D-03	Orange/Yellow		611-103	611-203	611-303	617-103
D-04	Red/Green		611-104	611-204	611-304	617-104
D-05	Red/White		611-105	611-205	611-305	617-105
D-06	Purple/Pink		611-106	611-206	611-306	617-106
D-07	Blue/Mint		611-107	611-207	611-307	617-107
D-08	Maya/Pink		611-108	611-208	611-308	617-108
D-09	Green/Orange		611-109	611-209	611-309	617-109
D-10	Red/Blue		611-110	611-210	611-310	617-110

Triple Color

Code	Triple Color	Power Chain	Short	Medium	Long	Ligature Tie
T-01			631-101	631-201	631-301	637-101
T-02			631-102	631-202	631-302	637-102
T-03			631-103	631-203	631-303	637-103
T-04			631-104	631-204	631-304	637-104
T-05			631-105	631-205	631-305	637-105
T-06			631-106	631-206	631-306	637-106
T-07			631-107	631-207	631-307	637-107
T-08			631-108	631-208	631-308	637-108
T-09			631-109	631-209	631-309	637-109
T-10			631-110	631-210	631-310	637-110

Radiopaque Separator

1000/pk

Blue color can be easily identified on x-ray and offer high resiliency for dependable separation quickly and efficiently.

Blue 602-101
Clear 602-102

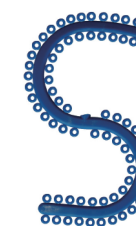


Type-S Separator

72/stick x 10

Latex-free and for use on posterior teeth prior to banding. Non radio opaque.

Blue 603-101
Clear 603-102



Rotation Wedge

10/stick * 10

Preformed tabs quickly snap over bracket tie wings for rotating individual teeth.

Clear 604-101
Gray 604-102



Bracket Guard Elastic

12/stick * 10

Latex Free Elastics; Reduces tooth contact with brackets on mandibular teeth; Great for reducing discomfort on underbite cases; 0.124 in. (3mm) outer diameter.

Clear 604-201
Gray 604-202

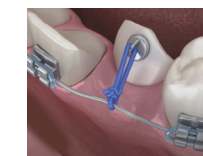


Elastic Power Thread

25'/spool, Clear Color

Medical grade elastics precisely extruded for use in rotations and traction applications. Tubing compresses to minimize slippage when knotted. Not made with natural rubber latex.

Clear .020" 605-201
Clear .025" 605-251
Clear .030" 605-301
Gray .020" 605-202
Gray .025" 605-252
Gray .030" 605-302



Wire Tube Sleeve

21'/spool

Fits wire size up to .022x.028; Used to wrap the archwires during treatment to minimize contact with oral tissues and provide protection for patients.

Clear 606-101
Blue 606-102
Gray 606-103
Green 606-104
Red 606-105



Protective Lip Bumper

2/pk, Upper&Lower

Used to wrap the intraoral devices like brackets and archwires during treatment to minimize contact with oral tissues.



ComfortPlus™ Reverse Gear

Ergonomic forehead and chin cup design, patent pending comfort silica cushion & one piece strap.

Single Pole	Small	700-101
Single Pole	Large	700-102
Double Pole	General Size	700-201



Reverse Gear Protraction Facemask

Replaceable form forehead and chin cup cushion pad, used for correcting Class III malocclusion

Foam Pads Kit	701-101
Washable Silicon Pads Kit	701-111
Foam Cushion Pads	701-109



Combination Strap

Chin Cup is included. Made of washable fabric.

Small	702-101
Medium	702-102
Large	702-103



High Pull Strap

Release module is included. Chin Cup is sold separately.

Small	703-101
Medium	703-102
Large	703-103



Cervical Neck Strap 704-101

1-1/2" wide cotton flannel, Release Module is included.



Release Module 704-201

Fits Cervical Neck Strap



Chin Cup 704-301

General size for adult and kid, ergonomic cup design provides maximum patient comfort, stainless steel side hooks accepts different extraoral devices.

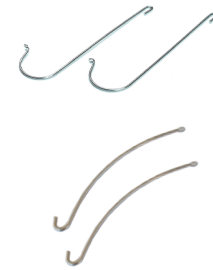


J-Hooks

2/pk

Made of stainless steel with strong structure, used for extraoral device hooking.

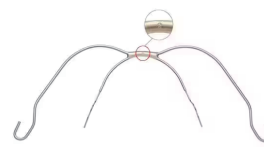
Type-A	704-401
Type-B	704-402



Face Bow

.072" outer bow designed to avoid frontal cheek area; .045" inner wire reinforced with inconel tubing. Smooth step-down prevents tissue irritation. The ends of the outer bow are offset to allow for easy attachment of safety release module.

Etched Numbers for Easy Identification



Loop Style

Size 1	83 mm	705-083
Size 2	90 mm	705-090
Size 3	97 mm	705-097
Size 4	104 mm	705-104
Size 5	111 mm	705-111



Standard Style	705-201
----------------	----------------



Organizing Grid Box

Used for organizing small dental device parts and accessories.

3x5 Small	710-135
4x6 Small	710-146
4x5 Large	710-245
3x8 Large	710-238



Magnetic Grid Box

6x6 grid, designed for sealed packing of small accessories, magnetic closing for tight seal to avoid mixing among slots, acrylic cover for clear view.

Small	15mm Slot	710-366
Large	20mm Slot	710-466



Smart Mold Kit 713-200

Safe for sensitive patients, saves chair time, invisible aesthetic attachments, as fast as 5-20 seconds cure time.



Archwire Organizer

Made of acrylic panels and hold up to 12 sizes of archwires. Clear view from outside. Great for archwire organizing and management.



Archwire Rack	709-101
Archwire Box with Lid	709-102



Power Chain Organizer 711-101

10"x4"x4", Made of acrylic panels and hold up to 18 spools, the reel pole diameter .40"(10mm), clear view from outside.



Ligature Tie Organizer 711-201

9"x4 1/2"x3 1/4", Made of 3/16" thick acrylic panels, hold up to 18 groups of sticks, clear view from outside, easy to wash by water rinse.



EZZ Photo Lip Retractor

10/pk

Excellent for occlusal photographs, Angled bend helps retract lips, Large size and small size combo



Small	721-101
Large	721-102

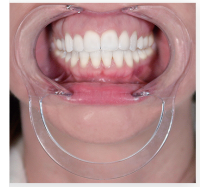


Extraoral Cheek Retractor

10/pk

Full view for direct bonding

Small	721-201
Medium	721-202
Large	721-203



Intraoral Cheek Retractor

10/pk

Unrestricted access to the mouth

Green	Small	721-301
Blue	Medium	721-302
Red	Large	721-303



Lip Ring Retractor

10/pk

Used for bonding and intraoral photography.

Blue	721-501
White	721-502
Red	721-503



Photo Cheek Retractor

10/pk

Provides full exposure of the posterior, large size and small size combo.

Single Ended	Small	721-601
Single Ended	Large	721-611
Double Ended	Small	721-602
Double Ended	Large	721-612



Stainless Steel Cheek Retractor

1/pk
Made of stainless steel.
Autoclavable up to up to 280 °F and 20 psi.

- Single Ended 721-701
- Double Ended 721-702
- Full Facial 721-703



Nola Dry Field Systems

1/Set
Completely eliminates saliva and fully exposes both arches making it ideal for all bonding applications.

- Small 721-801
- Large 721-802



Aluminum Ruler

Used for intraoral size measurement.

- Finger Ruler 712-101
- Straight Ruler
- Red 712-201
- Blue 712-202
- Green 712-203
- Gold 712-204
- Purple 712-205



Arch Forming Turret

Made of stainless steel, forms arch wires from .016 to .022.

- 0 Torque 706-101
- 5°&7° Torque 706-102



IPR(Interproximal Reduction)

Used for removal of enamel proximally to create space for tooth movement.

- Strip HD-15 707-115
- Strip HD-25 707-125
- Strip HD-40 707-140
- Strip HD-60 707-160
- Strip HD-90 707-190
- Thickness Gauge 707-201
- Manual Kit 707-301



- Auto Kit 1:1 Ratio 707-401
- Auto Kit 4:1 Ratio 707-402

Includes Contra-angle, Water hose, Thickness Gauge Set, Manual Tool, Strip *10, Stainless Steel Organizing Box



Ligature Gun

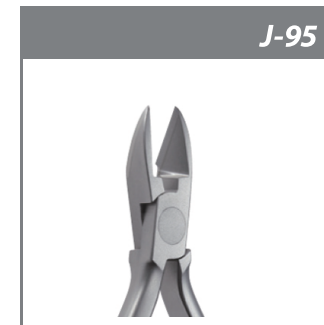
Safe, convenient means of applying ligatures to brackets. Eliminates soft tissue damage.

- Plastic Blue 708-101
- Plastic Gray 708-102
- Aluminum 708-201

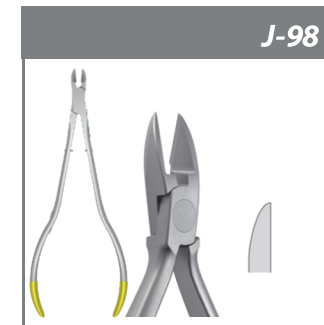


Instrument Holder 713-101

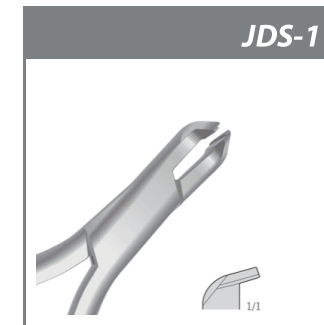
Hold up to 12 pliers, made of stainless steel with strong sturcture. Easy installation within 5 minutes.



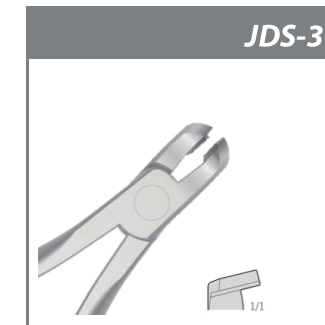
J-95
Ligature Cutter for Soft & Hard Wire
Max Ø 0.3mm (.012")
130mm, 15° Angled



J-98
Ligature Cutter for Soft & Hard Wire
Max Ø 0.3mm (.012")
175mm Long Handle, 15° Angled



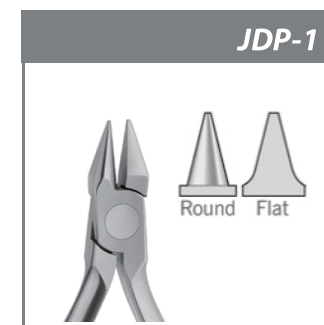
JDS-1
Distal Cutter with Holding Device
Max Ø 0.55x0.64mm (.022"x.025")
Min Ø 0.35mm (.014")



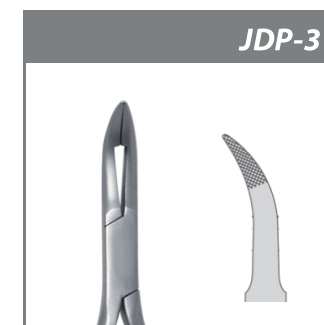
JDS-3
Distal Cutter with Holding Device
Max Ø 0.55x0.64mm (.022"x.025")
Min Ø 0.35mm (.014"), 150mm Long



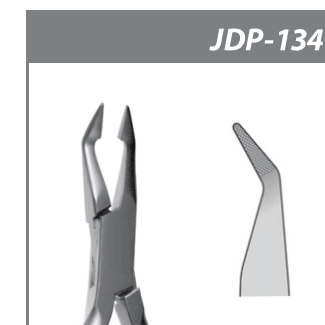
J-96TC
TUNGSTEN CARBIDE
Side Cutter for Hard Wire
Max Ø 1.0mm (.040")
150mm Long, Tungsten-Carbide Insert



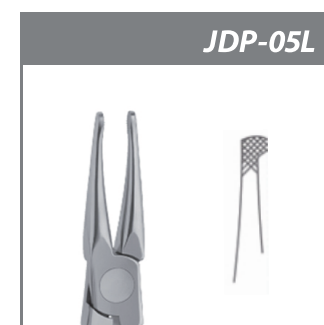
JDP-1
Bird Beak Universal Pliers
Max Ø 0.7mm (.028")
For soft and hard wire, 125mm Handle



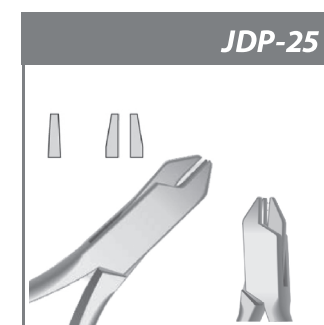
JDP-3
Weingart Universal Pliers
Max Ø 0.7mm (.028")
145mm Long Handle



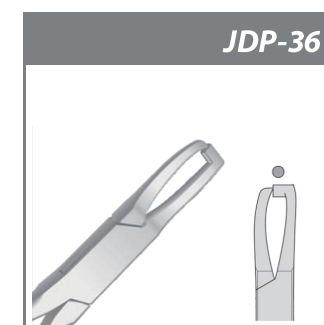
JDP-134
Weingart Universal Pliers
Max Ø 0.5mm (.020")
140mm Long Handle



JDP-05L
How Universal Pliers for Multiband
Max Ø 0.7mm (.028")
145mm Long Handle



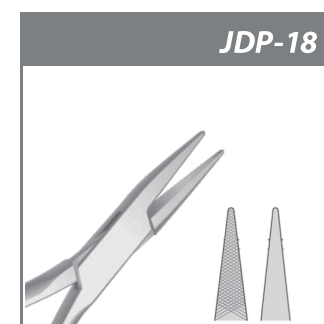
JDP-25
Aderer Pliers
Max Ø 0.9mm (.036")
For soft and hard wire, 125mm Handle



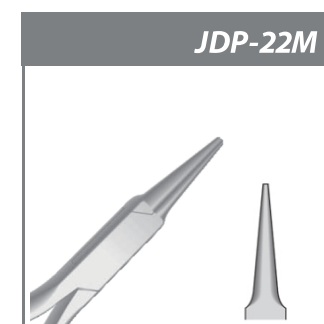
JDP-36
Oliver Band Remover
140mm Long Handle



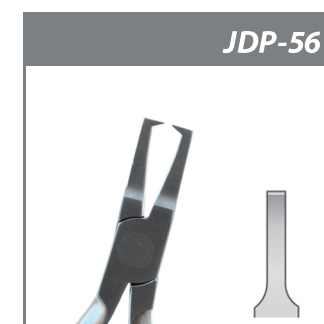
JDP-36T / JDP-36XT
JDP-36T Oliver Band Remover
JDP-36XT Adhesive Remover
Replaceable Plastic Tip, 140mm Long



JDP-18
Goslee Pliers
For soft and hard wire, 140mm Handle



JDP-22M
Langenbeck Round Pliers
140mm Handle



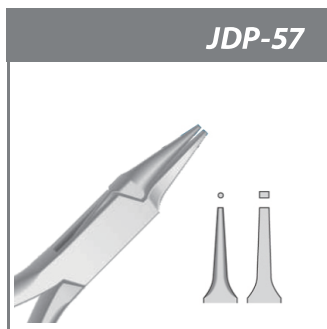
JDP-56
Debonding Pliers - Straight
Designed to remove anterior brackets
135mm Handle



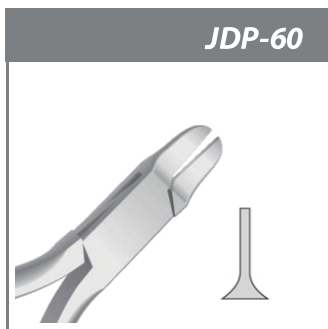
JDP-78 / JDP-78C
45° Angled 90° Angled
Debonding Pliers - Angulated
Designed to remove posterior brackets
135mm Handle



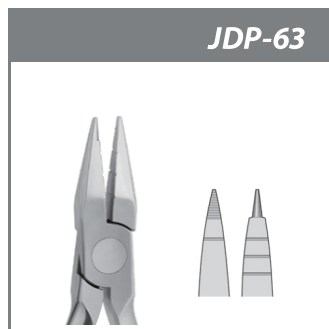
JDP-46
Adams-Nance Crasp Bending Pliers
 Max Φ 0.3mm (.012")
 130mm, 15° Angled



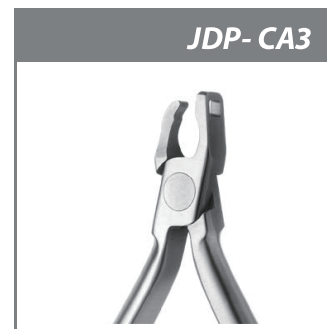
JDP-57
Round and Square Pliers
 Max Φ 0.3mm (.012")
 175mm Long Handle, 15° Angled



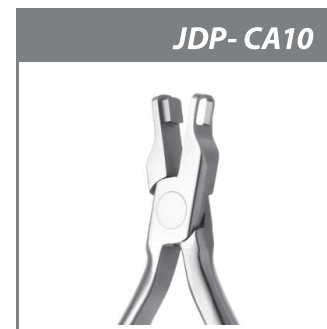
JDP-60
Angle-Tweed Pliers
 Max Φ 0.55x0.64mm (.022"x.025")
 Min Φ 0.35mm (.014")



JDP-63
Jarabak Pliers
 Max Φ 0.55x0.64mm (.022"x.025")
 Min Φ 0.35mm (.014"), 150mm Long



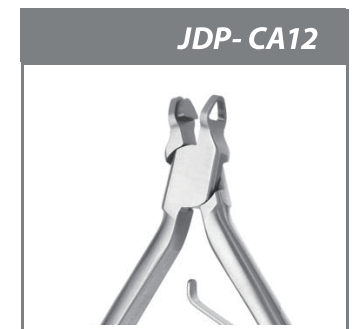
JDP-CA3
The Bite Plane
 Adds a lingual outdent to maxillary anterior clear aligners



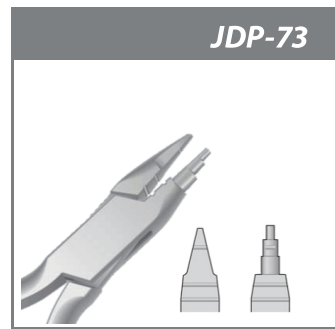
JDP-CA10
The Bootstrap Punch Pliers
 Creates gumline cutouts in clear aligners for precise button placement



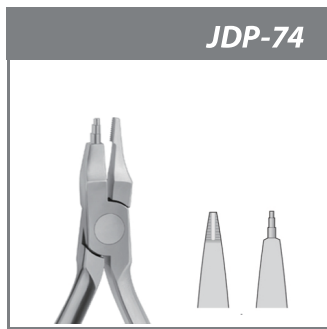
JDP-CA11
The Multi Punch Pliers
 Creates a cutout on the tough-to-access occlusal aspect of clear aligners



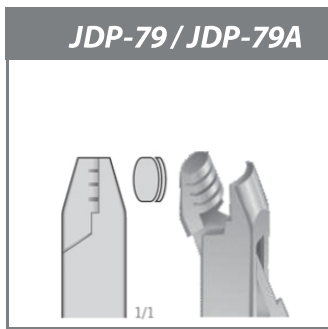
JDP-CA12
The Precision Aligner Punch Pliers
 Spring Loaded
 Creates a cut-out



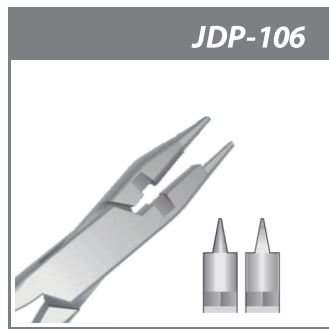
JDP-73
Young Pliers
 Max Φ 1.0mm (.040")
 150mm Long, Tungsten-Carbide Insert



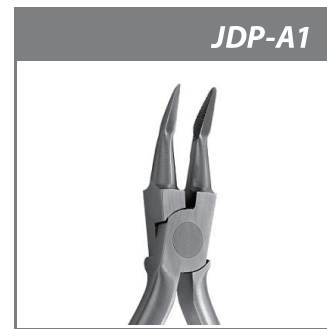
JDP-74
Tweed Pliers
 Max Φ 0.7mm (.028")
 For soft and hard wire, 125mm Handle



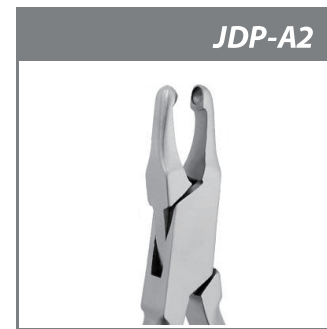
JDP-79 / JDP-79A
DELAROSA Pliers
 JDP-79 Groove Guides .016", .018", .022"
 JDP-79A w/o Groove Guides



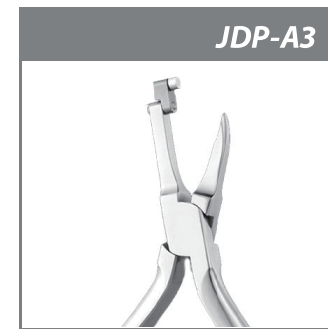
JDP-106
Angle Light Wire Plier with Cutter
 Max Φ 0.6mm (.024")
 135mm Handle



JDP-A1
Slim Weingart Pliers
 3M Model



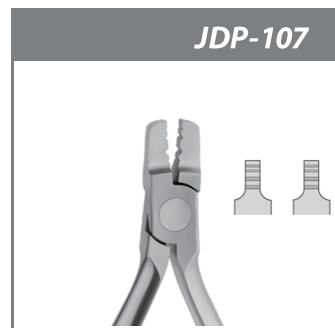
JDP-A2
Abell Contouring Pliers



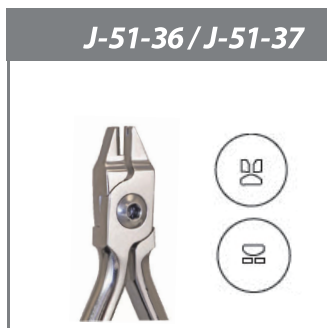
JDP-A3
Temporary Crown Remover



JDP-A5
Ligature Wire Twister Instrument
 Holds pre-twisted ligatures & Kobayashi ties for easy placement



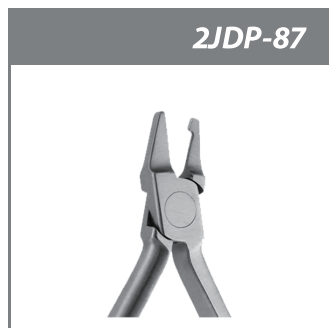
JDP-107
Lingual Arch Forming Pliers
 Max Φ 0.75/0.90mm (.030"/.036")
 125mm Handle



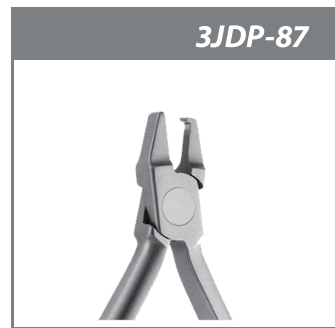
J-51-36 / J-51-37
Surgical Hook Crimping Pliers
Arch Hook Crimping Pliers



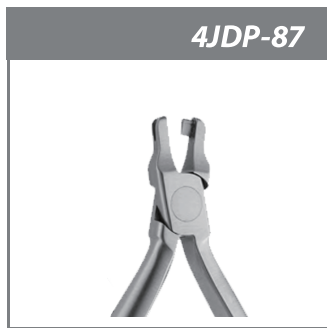
6JDP-87 / 7JDP-87
NiTi Lingual Hammerhead Pliers
 6JDP-87 w/o serrations
 7JDP-87 serrated



2JDP-87
Vertical Pliers
 Over-correction of rotations
 Create a rotational couple



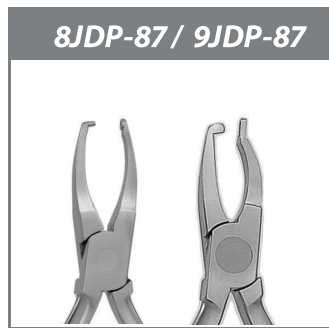
3JDP-87
Horizontal Pliers
 Enhance retention of aligners or retainers.



4JDP-87
Tear Drop Pliers
 Provide a reservoir to hold elastics in place as the aligner is seated.



5JDP-87
Hole Punch Pliers
 Create half-moon cutouts
 Nip away plastic to provide clearance



8JDP-87 / 9JDP-87
Aligner Pliers
 8JDP-87 Dimple Pliers (1mm)
 9JDP-87 Retention Pliers (2mm)



JDR-K1 POWER CROWN REMOVER Set of 2

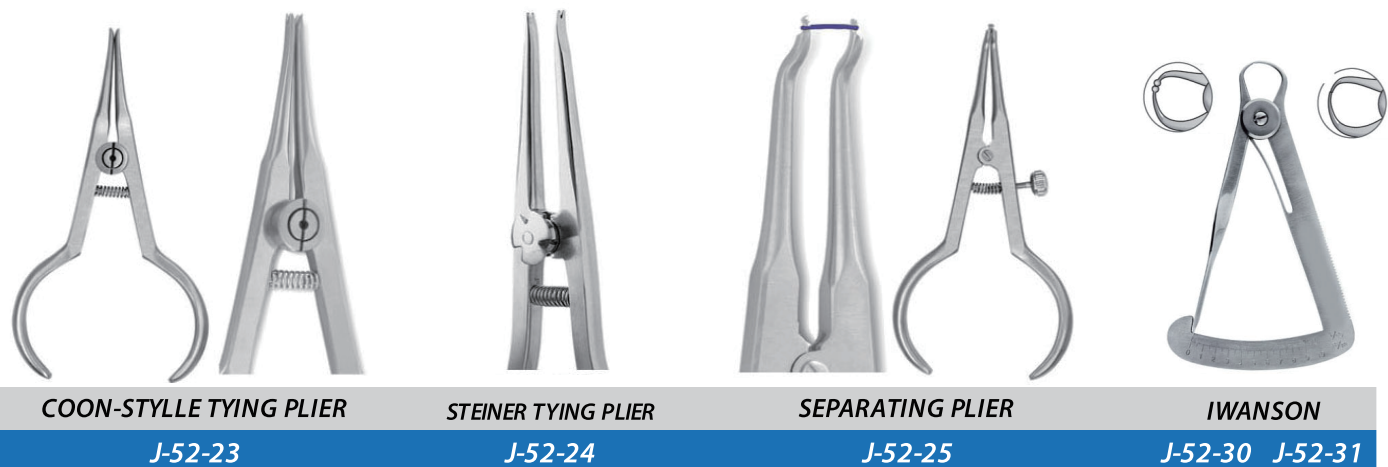
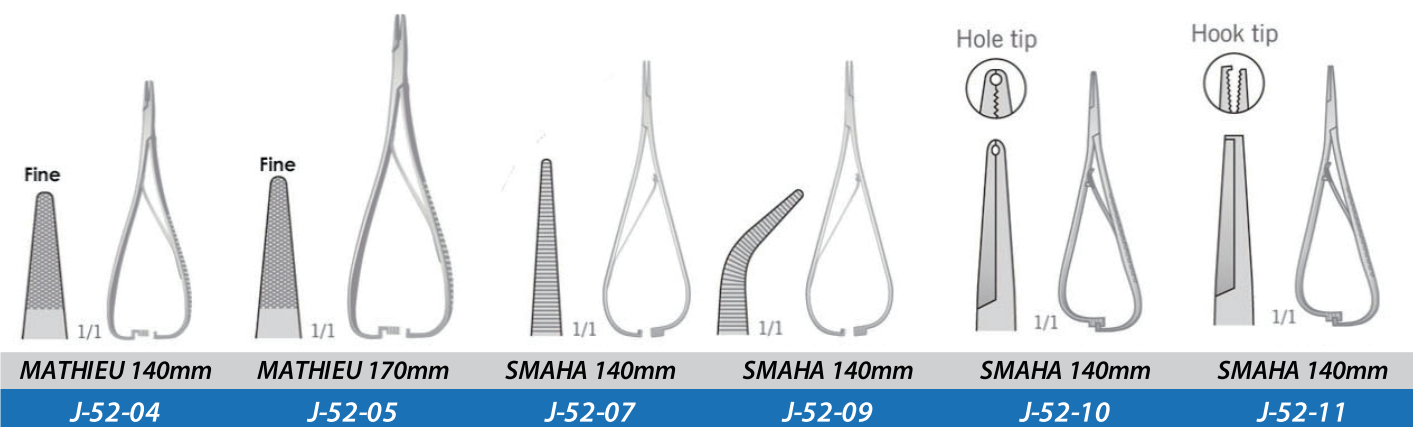
Can be used on all 32 teeth, buccal & lingual.
 Can be used on Implant, Zirconia, Temporary, Bridge, Regular



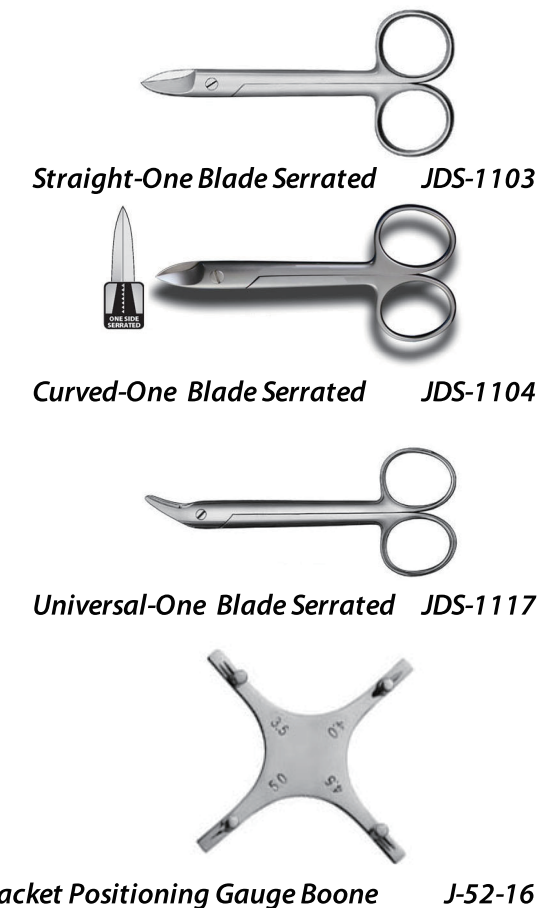
DIRECT BOND BRACKET TWEEZERS



BUCCAL TUBE PLACING TWEEZERS



BEEBEE SCISSORS



HAND TOOLS

